

ST. LUKE'S EPISCOPAL CHURCH

2019

ANNUAL REPORT

SAINT LUKE'S EPISCOPAL CHURCH
8009 FORT HUNT ROAD
ALEXANDRIA, VIRGINIA 22308
(703) 765-4342
WWW.SAINTLUKESCHURCH.NET

connecting Christ and community

STAFF

The Rev'd Veronika Travis, Associate Rector
Susan Bentley, Parish Administrator
Kate Weber-Petrova, Organist and Choirmaster

Cover by Jeffrey Aaron

Original Celtic Cross Graphic by Dawson Graphics, Sarasota, Florida

Table of Contents

AGENDA	2
ANNUAL MEETING OF ST. LUKE'S, FEBRUARY 10, 2019.....	4
STAFF AND WARDENS	5
<i>THE ASSOCIATE RECTOR.....</i>	5
<i>THE ORGANIST AND CHOIRMASTER.....</i>	6
<i>THE WARDENS.....</i>	6
CONGREGATIONAL TRENDING DATA.....	9
FUNCTIONAL AREAS OF MINISTRY UNDER THE VESTRY (2019).....	10
❖ STEWARDSHIP OF RESOURCES.....	11
<i>ADMINISTRATION, BUILDING AND GROUNDS (ABG) COMMITTEE.....</i>	12
<i>FABRIC OF ST LUKE'S (FOSL) COMMITTEE</i>	13
<i>2019 CAPITAL CAMPAIGN: BUILDING FOR MINISTRY</i>	13
<i>ENDOWMENT COMMITTEE REPORT - 2019</i>	14
❖ CHRISTIAN FORMATION AREA.....	15
<i>EDUCATION.....</i>	16
<i>COMMUNITY OF HOPE: ST. LUKE'S CIRCLE OF CARE.....</i>	20
<i>THE MINISTRY COMMISSION.....</i>	20
<i>WORSHIP.....</i>	21
<i>OUTREACH.....</i>	22
❖ MEMBERSHIP	26
❖ OTHER CHARTERED ORGANIZATIONS.....	30
THE TREASURER'S REPORT	34

**ST. LUKE'S EPISCOPAL CHURCH, WELLINGTON, ALEXANDRIA, VIRGINIA
ANNUAL CONGREGATIONAL MEETING, FEB. 9, 2020**

AGENDA

Call to Order: Greg Fortsch, Sr. Warden

Prayer for Saint Luke's: Rev. Veronika Travis, Associate Rector

Almighty God, send Thy Blessing upon St. Luke's Church, and all of us who worship Thee within its walls. With Thy help may we ever strive to strengthen and enlarge this congregation by our prayers, our friendliness, and our unceasing labor. So shall Thy Kingdom come and Thy will be done on earth as it is in Heaven, through Jesus Christ our Lord. Amen.

Quorum: Susan Bentley

Motion to approve minutes of February 2019 Annual Meeting.

Nominating Committee Report (Greg Fortsch)

Nominations: Scott Cameron, Lee Gilmore, Reynold Schweickhardt, Carlo Uchello, each for a three-year term; and Dylan Kleiman and Robert Lamb as youth members, each for a one-year term.

Call for nominations from the floor: Greg Fortsch

Motion to close nominations

Motion to cast a single vote for the entire slate

Vote

Congratulations to the new Vestry members

Thanks to the Nominating Committee and retiring Vestry: Greg Fortsch, Melisa French, Frank Morgan, Brian Tringali

Treasurer's Report (Alan Hope)

Report on Building for Ministry Capital Campaign (Don Hazen)

Report on Discernment Committee (Paul Johnson)

Warden's Report (Greg Fortsch)

Gift Recipients for the interest from the Rev. Lynda Hergenrather Fund

Gift Recipients for the Living Memorial Funds (Greg Fortsch)

Courtesy Resolutions: The Rev'd Neal Goldsborough, the Rev. Tuck Bowerfind, the Rev. Lynda Hergenrather, the Rev. Grace Pratt, the Rev. Ketlen Solak, the Rev. Joanie Peacock, Mrs. Margaret Morgan, the Rev. Roger Tilden, and the Rev. Mike Moore

Questions

Motion to Adjourn

Eligible to serve on the vestry: Only Lay persons, who are confirmed adult communicants in good standing of the church, as defined in General Convention Canon I.17, shall be eligible for election as Vestry members of such Church. (Canon XI, Section 4, Diocese of Virginia)

Eligible to vote at election of vestry members: All adult communicants in good standing, registered in the particular Church in which they offer to vote, shall be entitled to vote at the election of Vestry members. The voting shall be by ballot in person and, unless otherwise provided by the meeting, a majority of the votes cast shall be necessary to a choice. There shall be no voting by proxy. But no election shall be valid unless the participating qualified voters number at least ten percent of the number of active communicants qualified to vote reported for the previous year. (Canon XI, Section 5, Diocese of Virginia)

VESTRY

2019

Melissa French*

Greg Fortsch*

Frank Morgan*

Brian Tringali*

2020

Cathleen Lewis

Charles Kinney

George Omohundro

Amanda Wallingford

2021

Reisa Kall

Christine Kelly

John Little

Tim Staples

(*Term expires upon the election of replacements).

TRUSTEES

Drewry Hutcheson, Jr.
Suzanne Reynolds

Frank Morgan

DELEGATES TO THE 223rd ANNUAL COUNCIL OF THE DIOCESE

Rob Lamb, George Omohundro

DELEGATE TO POTOMAC REGION

George Omohundro

NEW COMMUNICANTS: (12); BAPTISMS (5); TRANSFER (7)

By Baptism: Beckett J. Bradley, Harrison C. Bradley, William W. Daly, George A.D. Savin, Jack F. Healy

By transfer: Anthony Mozzocoli, Anne Savin, Gabriel Savin, Kimberly Rennick, Alexander Rennick, Phoebe Rennick, Sydney Rennick

CHURCH SERVICES IN 2019

	Sundays	Week Days	Private	Total
Holy Eucharist	111 (109)	20 (21)	17 (57)	148 (187)
Daily Office		33 (53)		33 (33)
Other Services (marriages, burials, etc.)				10 (9)

(2018 figures are in parentheses)

ATTENDANCE FOR SELECTED SUNDAYS IN 2019

First Sunday in Advent	130	(144)
First Sunday in Lent	138	(151)
Pentecost Sunday	144	(143)
Easter Sunday	345	(335)

(2018 figures are in parentheses)

ANNUAL MEETING OF ST. LUKE'S, FEBRUARY 10, 2019

The Rev'd Ellis T. Bowerfind, the rector, called the meeting to order with prayer at 11:30 a.m. A quorum was present.

Cathy McPeek motioned to approve the minutes of the Annual Meeting held in February 2018, the motion was seconded and passed unanimously.

Suzanne Reynolds, Sr. Warden, presented the following parishioners for election to the vestry: Reisa Kall, Christine Kelly, John Little and Tim Staples. Tuck called for other nominations and none were presented. Judy Bryan motioned to cast a single vote to elect the entire slate, the motion was seconded and passed unanimously. The slate of nominees was elected unanimously. The committee and retiring vestry members (Cathy McPeek, Terri O'Connor, Skip MacMichael, Christ Weaver, Don Hazen (absent), and Suzanne Reynolds were thanked for their service.

RECTOR'S REPORT: Rev. Bowerfind began by recognizing the accomplishments of this Vestry: reorganizing the Vestry's functional areas, the 20s, various member involvement strategies, the sabbatical, the call to Veronika, the feasibility study and the authorization of a capital campaign for \$525,000 for the Parish Hall and other projects consistent with the Long-term Building Plan.

Tuck also highlighted several items in his written report, noting that we have rededicated ourselves to spiritual growth: growing in our capacity to love God and our neighbors. Tuck provided examples of new perspectives from the Diocese and Fairfax County, and urged St. Luke's to consider what it means to love our neighbors. Additionally, he noted that small groups can be a catalyst for spiritual growth, and he described two new groups at St. Luke's: Safety in our Schools (reducing gun violence) and Youth and Adult Support Groups under PFLAG. There are quite a few small groups that meet at St. Luke's; there's a lot of spiritual growth going on!

St. Luke's will be moving forward with a Capital Campaign, right-sized to \$525,000, with a focus on the Parish Hall and other projects. We will need a lot of conversations about this to get the best possible result, in ways we can't even imagine. It's also time to celebrate – it's the 90th anniversary of Aggie and the Seminarians! Tuck encouraged everyone to read or reread the history of St. Luke's, available on our website.

TREASURER'S REPORT: Alan Hope, Treasurer, was not in attendance, but Tuck noted that he gave his report at the Adult Forum on Sunday, February 3.

WARDEN'S REPORT: Outgoing Senior Warden Suzanne Reynolds asked that parishioners read the formal report in the booklet on page 8. Suzanne said that the kitchen is her office, an apron is her uniform, cooking is her joy, and each new recipe is an adventure. She joined the Vestry in 2016, and she learned that almost all are concerned with the health and welfare of St. Luke's – work together, pray together, stay together. She commends Tuck, Veronika, and Susan for their patience, and thanked the congregation for allowing her to serve.

Rev. Bowerfind thanked and acknowledged Kate Weber-Petrova, who has meant so much for the life and spirit of this place.

Rev. Bowerfind noted that the Hergenrather Fund's earnings of \$140 will be designated (probably to KIVA) by the Outreach Committee. He also announced the designation of the Living Memorial Fund earnings to our 90th Anniversary Celebration. Tom Hargrove will convene a group to document the last 10 years of St. Luke's history.

A resolution to send greetings to all previous living rectors and their spouses, Rev. Michael Moore, Rev. Lynda Hergenrather, Rev. Grace Pratt, and Rev. Joanie Peacock was approved without opposition.

Richard McFarland moved to adjourn the meeting. The motion was seconded and passed. The meeting adjourned at 12:27 pm.

STAFF AND WARDENS

THE ASSOCIATE RECTOR

The church is a community of learning and growth, as we spend time together in worship, social events and formation events. Individuals connected with each other in God's love become one organism, and just like any organism, the right conditions are necessary for it to grow and flourish. I have had the joy and responsibility for guiding several formation and growth efforts in 2019.

In the children's ministry and youth program, our committees have continued to work on creating more intergenerational formation opportunities, and several were quite successful this year. The Baptism party in January was a fun event where older and younger parishioners shared stories of their baptisms and learned about what it means to be a baptized minister. Youth confirmation class was held at the same time as the Sunday Evenings in Lent program, to encourage discussion between parents, teens and other adult mentors about the basics of the faith and of being a member of the Episcopal Church. A few teens got text messages from their parents about the creeds as a result! The pumpkin patch continued to be a bright spot for intergenerational work together, and the youth group worked with St. James Episcopal Church to pack 10,000 easy to prepare meals in one morning for Rise Against Hunger. Children and youth helped lead worship more often than ever this year, as they joined the ranks of the lectors and chalice bearers, and taught adult acolytes how to serve at the altar. I hope to continue these efforts in 2020 and to work with parents, youth and other adults to evaluate our youth Sunday school groups and make sure our curriculum (J2A) continues to serve us well.

The children's ministry team continues to grow and support new seasonal activities, including a Jesse Tree event that taught the story of Jesus' family tree to children, youth and adults. They also hosted a movie night connected with studying the Exodus story in the WorkshopCycles Sunday School. WorkshopCycles and Catechesis of the Good Shepherd continue to serve our youngest members well. I am grateful to the steering committee and the teachers in all of these programs for their fine work. Diana Moreland is our kind and knowledgeable nursery care giver, and though we can always benefit from adults in the community providing safe care, she has done an admirable job during the 10 AM service.

For several months in 2019, Tuck and I met with a group that was dedicated to finding out what helps spiritual growth and what hinders it. This was part of the RenewalWorks process begun two years before, and it has led me to reflect on the growth of this church. I've noticed several things at St. Luke's that support spiritual growth:

- Regular participation by a large number of youth and adults in worship as leaders (lectors, chalice bearers, acolytes, ushers and greeters).
- Small groups where people share about their lives with openness
- A vestry that reflects spiritually on what its tasks are, and prays together
- A willingness to accept transition as a regular part of life and to experiment with new things in order to discern God's new works in our lives
- A general interest in the well being of our neighborhood and the community beyond it. We look beyond our church, and are sometimes willing to be in discomfort for the sake of comforting others.

St. Luke's has a store of openness and goodwill to work with as we try to provide opportunities for growth and challenge while reducing the factors that hinder spiritual growth in our community. I am grateful to Geoff French and the team for this important work. More details on what the vestry will do with the recommendations are to come.

Finally, I was as surprised as all of you when Tuck announced his departure. I will always be grateful for my first year of ministry here with him. I have grown spiritually by working with an experienced and kind leader. I have also grown tremendously by being with all of you. Thank you for your continued hard work and love of God as we go through this time of transition together. St. Luke's remains a growing, learning and loving community. In the coming year we will learn more about ourselves and find that we are ready to join in the new thing that God is doing here.

- The Rev'd Veronika Travis

THE ORGANIST AND CHOIRMASTER

The Episcopal hymnal is a treasure trove of many of the Christian church's most beautiful sacred texts and tunes. The oldest text in the 1982 hymnal is a Greek hymn from ca. 110 (Hymn No. 302). It's amazing to think about how many times throughout history this text has been said or sung by Christians around the world. Likewise, the musical hymn settings offer some of the finest melodies of the past, many of which were written or harmonized by J.S. Bach, Haydn, Vaughan Williams, and other great composers. This hymnal is a collection that links our past with our present. In the same way, the music ministry at St. Luke's is a thread that knits together our local church's history with the moment we find ourselves in today. Music has always been an important part of St. Luke's. Our church has a strong choral tradition that spans decades and has involved singers of every age. With the acquisition of our beautiful Visser pipe organ in 2001, the parishioners of St. Luke's made a worthy investment in the future of our music ministry, ensuring that worshipers will be led in song by a noble instrument for generations to come. We have a variety of amateur and professional musicians in our congregation who contribute regularly to worship services and Sunday School music, and we have a team of energetic volunteers who bring music to the community by hosting a variety of concerts several times a year. The vibrancy of St. Luke's is reflected in a musical tradition that brings together old and young, professional and amateur, contemporary and historical. Let us continue to build upon this tradition so that future generations may know God's love and experience his glory through the music they hear in this holy place.

Kate Weber-Petrova

St. Luke's has changed in many ways since 1940. But some things have remained constant. Jesus is still the way, and our companion on the way. We are still a church in the Diocese of Virginia! We are still a place where young people and adults, baptized and unbaptized come together to learn, pray, and work together to try to make the world a better place.

- The Rev. Tuck Bowerfind, 2018 Annual Report

THE WARDENS

The Vestry began the year at a retreat in late February at Pohick Church, just down the road in Lorton. Pohick has a wonderful building on the grounds separate from the church and parish hall where the Vestry was able to meet peacefully and prayerfully to plan our work for the upcoming year. Despite the surroundings and a well-organized and productive agenda, the one 2019 event the Vestry could not plan for at that time was the departure in November of our longtime rector Tuck Bowerfind to heed the call as the next rector of Grace Episcopal Church in Lexington, Virginia.

While the Vestry had a highly productive year outside of its work preparing the parish for the transition to a new rector after Tuck's departure, it is impossible to overstate the prominence of the Vestry's role when such a momentous task as replacing the rector is entrusted to it. While the work of the Vestry is always important, its work takes on added significance when it must organize and oversee the choice of a new rector, and requires much more time and dedication of the volunteers who serve on the Vestry. The wardens are grateful for the level of dedication, thoughtfulness, and hard work that the Vestry brought to this and all the decisions it made this year.

As noted in last year's report, the Vestry spent a considerable amount of time in 2018-19 addressing a feasibility study for possible renovations to parts of the church physical plant, all of which were in line with the Long-Term Building Plan. Work on that front during 2019-20 continued apace, with the launching of a capital campaign entitled "Building for Ministry" (BfM) which, while still in progress with final pledges being solicited, has been successful.

While a capital campaign team, independent of the Vestry and supported by consulting expertise from the Episcopal Church Foundation (ECF), was established to organize and run the campaign, the Vestry was closely involved in all decisions related to the campaign. The year began with interactive sessions led by Vestry member Christine Kelly to inform the numerous stakeholders about the capital projects and solicit feedback on priorities. Data from the 2018 Feasibility Study and Christine's focus group sessions led the capital campaign committee and Vestry to determine that campaign proceeds would fund renovation of the parish hall, installation of outside/parking lot lighting (a safety priority)

and strengthening the Endowment Fund. Toward that end, the Vestry approved the case statement explaining the campaign and its priorities as well as the campaign solicitation materials, including pledge cards and brochures. The Vestry authorized the launch of the quiet and public phases of the campaign, provided a prayer and theme for the campaign, and the members volunteered their time to help raise money in addition to providing their own pledges to support the campaign.

In addition to its important work supporting and stewarding the BfM campaign, the Vestry supported and funded a myriad of outreach-related requests to the benefit of St. Luke's and our community, including the ever popular Pumpkin Patch, as well as the annual St. Luke's Barbeque, Craft Fair, Boot Sale, and many other worthy projects. The Vestry also evaluated and approved 2019 budgets for the church and St. Luke's Day School, and approved St. Luke's annual pledge to the Diocese of Virginia. The Vestry also worked hard to increase its visibility and transparency within the parish community by providing periodic updates on the decisions made at its monthly meetings, and by holding periodic "Wardens' Corner" question and answer sessions after Sunday services.

The Vestry also provided important support for the building which houses our church by approving funding to replace the long-serving roof, making repairs to the fire alarm system, and working to emphasize the need to add that aging system to the list of items that must be addressed in the Long-Term Building Plan. In addition, the Vestry thoughtfully considered security and safety issues related to the integrity of the building, which included consulting with the Fairfax County Police Department on security measures, conducting an adult forum and special Saturday session devoted to the topic, holding meetings with usher teams on the issue, and updating the Sunday "Vestry duty" handbook to include information on the location of defibrillators in the building and instructions on appropriate door locking when services are in progress.

During the Vestry's February retreat, Vestry members engaged in a Mutual Ministry Review with an eye toward celebrating the church's 90th anniversary. Those efforts bore fruit with a memorable fall celebration complete with beautiful pictures in the parish hall depicting the church through its 90-year history. On the celebration front, the Vestry spent considerable time – and with considerable help from past Senior Warden Suzanne Reynolds and many, many others including youth – planning and putting on a celebration in early November of our Senior Saints. The result was a joyous and lovely luncheon honoring their faithful service to God and our parish. Equally joyous, though bittersweet, was the reception planned and supported by Vestry members and many others to celebrate the Bowerfinds' service to the church and to send them to Lexington with fond memories of St. Luke's and our eternal gratitude.

With Tuck's departure, the Vestry wasted no time in getting down to the business of spearheading the process of finding a new rector. With great support from the Diocese (rector transition support is one of the many Diocesan resources made possible by our pledge and financial support to the Diocese noted above), the Vestry, under the leadership of the Senior Warden, who becomes the "ecclesiastical authority" of the church in the absence of a rector, assured that the church staff's needs were met and important decisions were addressed. This included setting up weekly meetings and regular contact with the staff in order to work on a variety of important issues, including finding supply priests to assist Veronika with Sunday services and preaching, discussing workload and resource issues with all staff, and helping with other decisions that must be made in the absence of a rector.

The Vestry also worked hard to select a Search Committee and determine that St. Luke's would initially seek a "Priest-in-Charge" rather than a rector, a model for rector transition that has become increasingly more common. We are pleased to have recently announced this seven-member team under the leadership of long-time parishioner and chairperson Paul Johnson. The wardens and Vestry have had numerous discussions with the Diocesan transition experts in preparing for the work of the committee and set up an inaugural meeting with the Diocesan Canon to the Ordinary to establish the committee's mission and commence its work, which began in January 2020. Finally, the wardens and Vestry continue to work with the Diocese to find an interim rector, a search which may or may not be successful.

We are grateful for a year in which our church has seen a positive capital campaign as well as a successful annual stewardship campaign, which were conducted simultaneously. The church continues to be in a positive financial position, with the payoff of our Fabric of St. Luke's (FOSL) capital campaign loan, continued revenue from the cell phone antennas

in our steeple, and an Endowment Fund, which many churches do not have. In addition, while we saw fewer pledges and fewer families pledging to the annual stewardship campaign than in 2018, which resulted in a reduction of the total amount raised, the relative decrease was due to normal attrition rather than as a result of the unusual simultaneous capital campaign. Nonetheless, it is important to emphasize that the Vestry will need to work with the parish to make sure the annual stewardship campaign for 2020 and into the future provides the funding needed to keep St. Luke's in a positive financial position. The Stewardship Report provides details on the information provided above elsewhere in the Annual Report booklet in which this report is contained.

There is so much more to serving on the Vestry than is contained in this report, especially in a year like the past one where momentous decisions had to be made and addressed that directly affect the health and viability of our parish. To borrow a thought from Suzanne Reynolds' Wardens Report for 2018, each member of the Vestry is an individual, but all together we have of one important and unyielding goal—the health and welfare of St Luke's Episcopal Church. The wardens count ourselves blessed to be in the midst of such a group, and we thank the Vestry and the whole St. Luke's family for the opportunity to serve in leadership and for providing us your continuing prayers and support.

Greg Fortsch, Senior Warden

George Omohundro, Junior Warden

CONGREGATIONAL TRENDING DATA

	Sundays, Cumulative Attendance				
	2015	2016	2017	2018	2019
Jan	870	696	769	546	543
Feb	1489	1480	1386	1179	966
March	2439	2590	2046	1895	1647
<i>Easter</i>	348	342	309	335	345
April	3400	3234	3045	2757	2419
May	4088	4075	3571	3233	2923
June	5038	4760	4205	3765	3597
July	5545	5445	4781	4338	4010
August	6301	5962	5217	4734	4575
Sept	6988	6813	5738	5587	5292
Oct	7736	8661	6355	6214	5853
Nov	8667	9225	7022	6837	6594
Dec	9848	9900	8185	8073	7788
Average Sunday Attendance (ASA)	189	190	154	155	150

Current Levels of Annual Giving:

Giving Level	Household Gifts in Range				
	2016 actual	2017 actual	2018 actual	2019 actual	2020 pledge
\$15,000 or above	1	3	1	2	2
\$10,000-14,999	8	6	7	6	8
\$6,000-9,999	11	13	10	14	14
\$3,000-5,999	31	36	33	31	30
\$2,000-2,999	26	23	26	22	20
\$1,500-1,999	7	3	9	12	11
\$1,000-1,499	19	25	25	18	13
\$500-999	10	15	17	13	10
Less than \$500	39	43	35	33	13
No Recorded Gift*	50	48	23	13	-
Total Number of Giving Households	152	167	163	151	122
Total Dollars given for operating expenses (does not include plate)	\$436,004	\$536,056	\$ 448,205	\$451,398	\$433,200
Median Pledge (the one in the middle)	\$2,500	\$2,400	\$2,114	\$2,500	\$2,500
Amount of Loose Plate Income	\$10,826	\$5,816	\$5,591	\$10,246	-
Annual Operating Budget (actual expenses)	\$493,342	\$536,208	\$503,321	\$533,560	\$511,310
Capital Campaign					
FOSL Restricted Income (BfM in 2019)	\$6915	-	\$3,000		\$117,384
FOSL Capital Campaign Pledges (BfM in 2019)	\$1,347,198	\$1,347,198	\$1,347,198	\$1,347,198	\$525,000
Planned Giving Campaign (Dec. to Nov.)					
# Endowment Gifts Received/\$ Total	7/\$10,928	8/\$6,631	6/\$4,133	7/\$10,129	
Endowment Value (as of November 30)	\$225,426	\$260,694	\$282,539	\$311,267	

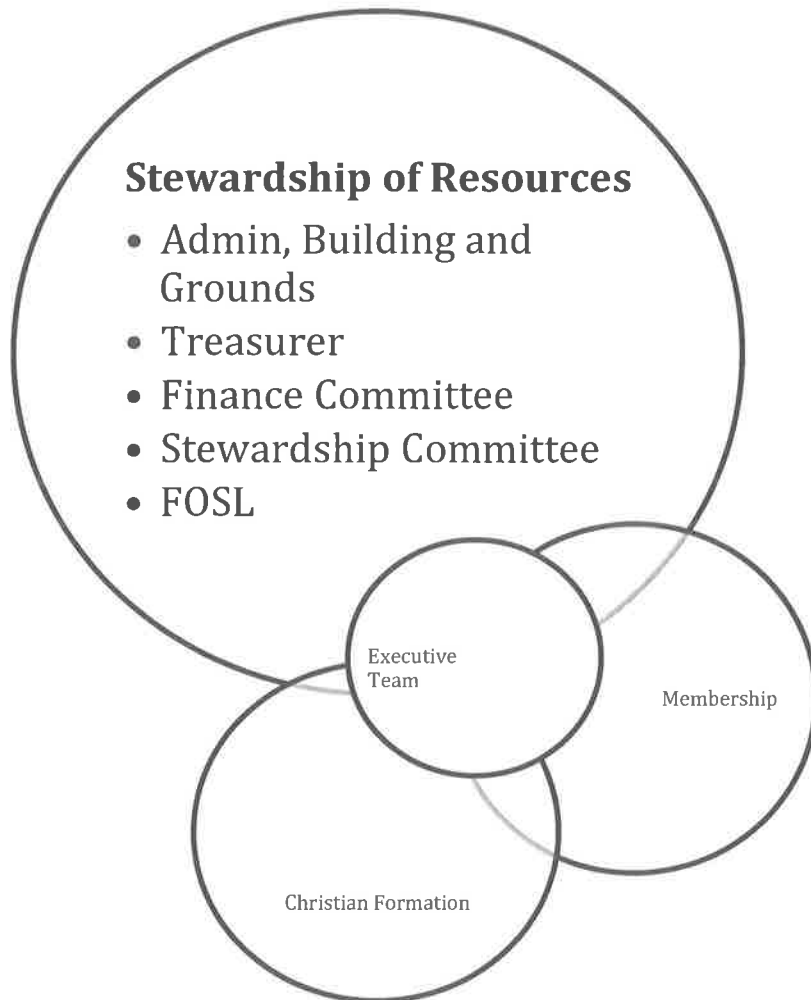
* Identified as Head of Household, Communicant, AND no gifts or pledges.

During 2019 the Vestry continued to organize itself under three main functional areas of ministry: Stewardship, Christian Formation, and Membership. Vestry members were assigned to implement each of the functional areas and ensure that the leadership, membership, purpose, and budgeting needs are properly defined or addressed. In addition to the three functional areas of ministry, there is an Executive Team comprised the clergy and wardens.

FUNCTIONAL AREAS OF MINISTRY under the Vestry (2019)

Stewardship of Resources Alan Hope, Treasurer Vestry Team: Christine Kelly John Little Tim Staples		Christian Formation Vestry Team: Frank Morgan, Charles Kinney			Membership Vestry Team: Melissa French, Cathy Lewis, Reisa Kall, Brian Tringali, Amanda Wallingford	Executive Team: Rector Tuck Bowerfind, Assoc. Rector Veronika Travis Sr. Warden Greg Fortsch Jr. Warden George Omohundro
Committees						
ABG Committee	Treasurer & Finance Committee	Outreach Committee	Education Committee	Worship Committee	Membership Committee	Other Chartered Organizations:
FOSL	Stewardship Committee		Community of Hope			
Subcommittees, programs, and other groups and teams						
Grounds	Endowment Subcommittee (Stewardship)	VIC HOP Rising Hope Meals Ministry	Adult Forums Old Town Irregulars	Acolytes Altar Guild Adult and Children's Choirs	Quarterly Socials FISH Groups	Boy Scout Troop 654
	Counters	Canned Food for UCM Meals on Wheels Kennedy Shelter Lunches eScrip	Adult Education Children's Education Youth Education (J2A, Rite 13, YAC)	Chalice Bearers and Lectors Hand Bell Choir Ushers Paul Spring Third Thursday Worship First Saturday Service Thursday Morning Prayer	Ladies 1 st Tuesday Men's Steak & Beer Greeters Coffee Hour Signage/media/ website/ newsletters/media	
Special Events						
Workdays	Annual Pledge Drive	Craft Fair Boot Sale Christmas Adopt a Family Adopt a kindergartner Ahli Arab Hospital	Pumpkin Patch	Children's Musical Christmas Pageant	Annual Picnic	Center for Pastoral Counseling
	Stewardship Dinner		Sunday Evenings in Lent		Gatesby Jones BBQ Choir Breakfast Easter Vigil/Dinner St Luke's Senior Saints Luncheon Shrove Tuesday	

MINISTRIES OF ST. LUKE'S



❖ STEWARDSHIP OF RESOURCES

Administration, Building, & Grounds (ABG), Stewardship, Fabric of St Luke's (FOSL), and the Building for Ministry Capital Campaign committees provide leadership for planning, management and oversight of our fiscal and physical resources.

ABG—Led by Christine Kelley, Tom Stallman, Sue Bentley
--Manages operating budget for all maintenance and repair of St Luke's
--Ensures the maintenance and repair of the St Luke's facility

FABRIC OF ST LUKES (FOSL) – Led by Don Hazen
--Creates and manages a Long-Term Building Plan
--Oversees long term maintenance and repair

BUILDING FOR MINISTRY – CAPITAL CAMPAIGN led by Don Hazen and John Young
- Raising funds and renovate the parish hall and other spaces in the building; lighting in the parking lot

STEWARDSHIP
--Annual Giving Pledge Campaign
--Planned Giving (Endowment)

ADMINISTRATION, BUILDING AND GROUNDS (ABG) COMMITTEE

The ABG Committee strives to maintain, repair and improve St Luke's facilities for our church family. With over 50 years of continuous use in our current building, we remain conscious of cost-cutting and productive investments for current and future savings for the efficient running of our church facility.

HVAC

As we continue to maintain and repair and improve the facilities at St Luke's, our HVAC system still requires special attention. We replaced an air handling unit this year to help keep our building systems running smoothly.

Roof

We have a brand new roof architectural asphalt shingle roof on our church to keep us dry from the exterior elements while also enhancing the exterior appearance of our building.

Security and Inspections

Our fire alarm monitoring system has been malfunctioning this year and will need to be replaced. We still use the original fire detection system that was installed when the church was constructed and Tom Stallman, Joe Daly and Christine Kelly are currently reviewing estimates and proposals for a completely new fire alarm and smoke detector system that we hope to have installed next year.

All of our current smoke detectors were replaced with long term (10- year battery life) detectors. Annual inspections required by various government agencies: fire safety inspection; fire extinguishers; fire alarm system testing, (which includes elevator and range hood); elevator hydraulics; elevator operation; boiler; range hood inspection and cleaning have been completed.

Maintenance

This year, Tim Staples removed one pew to gain more space for Kate Weber-Petrova to comfortably play the piano and conduct the choir. The screen in the library was replaced and we have a new locking mailbox – both thanks to a fellow friend and carpenter, Bill Alderman, who donated his time to help with the installation of those items. We continually work to keep stairwells clear and help with the movement storage and staging of the chairs. Small gardening and weeding projects were completed during the winter spruce up of the church. Windows were also washed and all of the wood in the narthex, nave and library was polished. Smaller but constant and continuing tasks included: repair of the Nave kneelers; re-organization of storage rooms; repair of furniture pieces; and touch-up painting around the church. Thank you to Tom Stallman, Tom Delaney and Tim Staples for their work on keeping our pews secure and steady as well as our floor tiles replaced. Thank you to Kate Weber-Petrova for her continual gleaning of choir-related items and suggestions to help keep our church home organized.

Your ABG remains conscious of price-for-value projects and continues to be mindful of cost effective, energy and money saving efforts for the benefit of St Luke's. Financially taking care of our clergy, staff and facilities is our priority. This includes paying salaries and insurance, as well as continuing periodic inspections, cleaning, maintaining and/or repairing—all while working within our budget.

These large and smaller projects were blessedly supported by our ever-faithful administrator, Susan Bentley. We continue to enjoy a dedicated and knowledgeable group of volunteers including, Don Hazen, Susan Harris, John Young, Tim Staples, Tom Delaney, Chris Weaver, Tom Stallman, Joe Daly and Steve Larsen. Our St Francis Gardening Group includes Beth Wells, Carol Bloom, Susie Ashton, Dixie Hougen, Eunice Theobalds and Judy Bryan. And thank you to so many others who have pitched in so that our church facility can support the wonderful works of our community. There is always more for ABG to do and we would welcome your help. If you are intrigued with building facilities and enjoy learning about the inner workings and guts of our building and also enjoy working with a great group of people, please join us in taking care of our church home from assessing needs, to accomplishing repairs to reviewing our Long-Range Building Plan to assisting in the success of the Capital Campaign.

Thank you for your support.

- Christine Kelly

FABRIC OF ST LUKE'S (FOSL) COMMITTEE

The FOSL Committee creates and manages a long-term building plan and oversees long term maintenance and repair plan.

The Committee had another busy year looking after the affairs of our physical facilities. Although much of our work this year was not obvious to the general congregation, important progress was achieved thanks to the dedicated efforts of Tom Stallman, Chris Weaver, John Young, Susan Harris, Skip MacMichael, Christine Kelly, John Little, Tim Staples and Joe Manous.

Only one significant capital project was undertaken this year. It was for the replacement of the shingled portion of the roof. In addition to aging the shingled portion of the roof has experience significant damage from high wind events over the past two years. It is believed that this portion of the roof is the original roofing. It has clearly exceeded its life expectancy. The new roof is warranted for 25 years.

In addition, the FOSL committee worked closely with the Treasurer to make the final lump sum payment on the outstanding construct loan one year early from steeple revenues. It also provided funds to support the Capital Campaign costs.

THE FOSL operations are funded by income from the cell phone companies in the steeple. In 2019 funds were committed as follows:

Funding for emergency repairs by AdminBldg&Grds	\$23,222
Reroofing project	\$44,888
Support for Capital Campaign	\$36,908
Monthly Loan interest payment	\$1,511
Monthly loan principal payments	\$14,404
Loan Balance Payoff	<u>\$37,482</u>
Total	\$157,885

Looking to 2020, FOSL notified the Vestry of its plans to upgrade and replace the fire alarm system to meet current code requirements at an estimated cost of at least \$75,000.

Submitted by Don Hazen, Chair

2019 CAPITAL CAMPAIGN: BUILDING FOR MINISTRY

In response to the congregation's support for a continuation of the Long- Term Strategic Building Plan, the Vestry authorized a Capital Campaign. Don Hazen and John Young volunteered to lead the campaign as Co-Chairmen. With a vigorous kickoff in September the campaign has exceeded its goal of \$525,000.

We owe a special thanks to all members of the congregation and the Saint Luke's Day School who contributed to the campaign making this possible. This is a grand way to celebrate St. Luke's 90th birthday and continue to meet our future mission needs.

The campaign's objectives were to raise funds for the expansion and renovation of the parish hall that included expanding the total size of the hall for larger and multiple events, adding ADA compliant restrooms on the 2nd and 3rd floor, and new storage and meeting rooms on the 2nd floor as first priority. The second priority is for lighting of our parking areas to enhance the safety and security for the many after dark events and activities.

This tremendous effort could not have accomplished without a great, hardworking team led Tom Hargrove, Chair of the quiet campaign, and Skip Jones and Paul Johnson, Co-Chairmen of the public phase. They were supported by a dedicated

team of solicitors who called on members of the parish. They included Greg Fortsch, George Omohundro, Amanda Wallingford, Suzanne Reynolds, Steve Parker, Drew Hutcheson and David Tucker. A special thanks to Marjy Jones as our Communication Director, Chris Weaver and Susan Harris as Special Event Co-Chairs and Cathy McPeck as our Administrator. This challenging task could not have been accomplished without the support of our rector, Tuck Bowerfind, the Vestry, and Maurice Seaton our consultant from the Episcopal Church Foundation. We greatly appreciated their support.

Looking forward, the plan is to contract with an architect to develop designs for review and approval later this year. The overall goal is to award a construction contract in the spring of 2021 and a construction start in June of 2021 with completion by September 2021.

Submitted by
Don Hazen and John Young
Co-Chairman

ENDOWMENT COMMITTEE REPORT – 2019

Forty-one parish families have committed to supporting our Endowment through their cash donations or naming of Saint Luke's in their estate plans. New members and support are welcome as we strive to grow our Endowment to \$500,000 or more so that the Fund can support and sustain the visionary goals of Saint Luke's Church

Healthy equity markets have allowed our Endowment Fund to grow to \$329,770 as of 12/31/19. This is an increase of \$57,591 from the prior year end, including additions to our endowment in the amount of \$13,941 in 2019. Please note that 10% of the earnings of Saint Luke's fundraisers, the BBQ, Craft Fair and Pumpkin Patch, are contributed to help build and sustain our endowment.

The goal of our Endowment Fund is to strengthen our foundation and support our neighbors by investing in:

- Capital needs to maintain and improve our buildings and grounds
- Christian Outreach through mission and ministries
- Occasional Special Projects as may arise

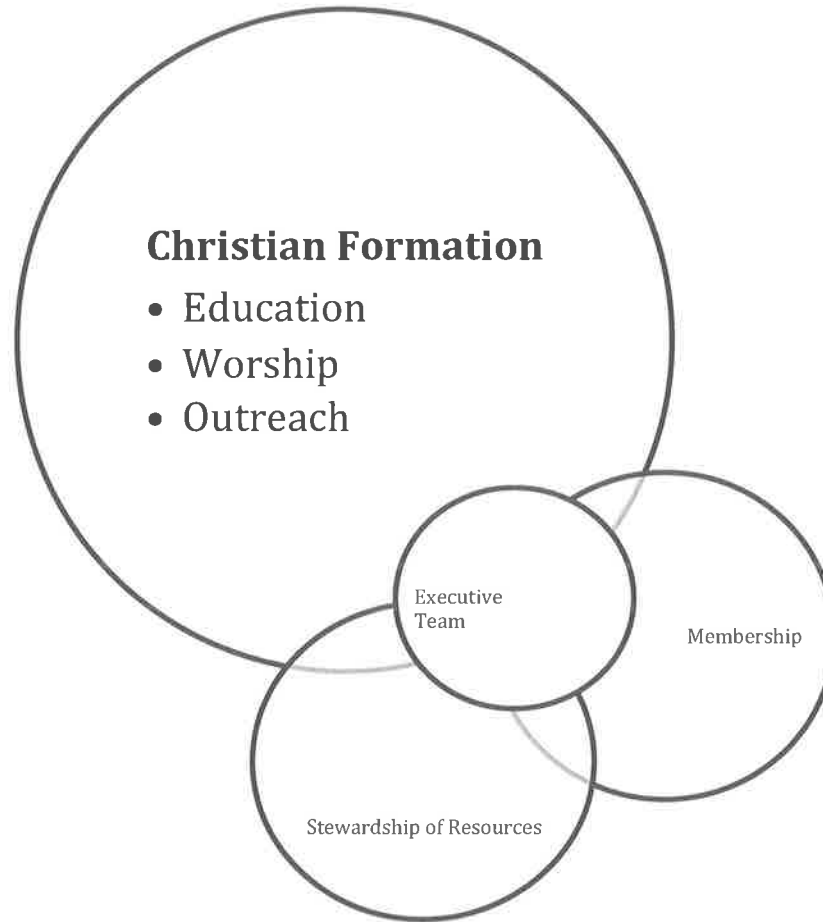
All expenditures from the Endowment Fund are subject to the approval by the Vestry. In 2012, the Vestry passed a motion that no funds will be spent until the principal balance has reached \$500,000. Regular deposits to our Endowment, along with continued positive investment returns project to reach the \$500,000 threshold sometime in 2025. Once this balance has been reached, expenditures are not expected to exceed 4-5% annually, thus, allowing the principal balance to be maintained in perpetuity.

Our Endowment Fund is subject to sustained and prudent management. It is professionally managed through the Diocesan portfolio which has historically combined solid growth with very low overhead and management fees.

There are currently several Endowment Committee positions available. Please let me know if you have interest in learning about our work or joining the committee. I wish to recognize our current committee members – George Coviello, Christine Kelly, Caroline Tringali and John Young.

Steve Parker, Endowment Chair

MINISTRIES OF ST. LUKE'S



❖ CHRISTIAN FORMATION AREA

Since 2017, a focus of the Formation Area has been to find practical ways to help each other grow in our capacity to love God, the Holy Trinity and our neighbors. In 2018, the Formation Area identified four tasks: 1) help all St. Lukers understand the spiritual journey, 2) include experiential and reflective spiritual opportunities in every ministry, 3) help St. Lukers embed the Bible in everything we do, and 4) organize a Spiritual Formation Committee.

St. Lukers made meaningful strides on this ongoing journey in 2019. On the reflective side, a number of Bible study and prayer groups met routinely throughout the course of the year. On the experiential side, Outreach was as strong as ever as you will read in that section of the report. Last, but not least, a Spiritual Formation Committee was formed and met throughout 2019 and will be reporting to the vestry in early 2020. We look forward to continuing on our journey together in 2020.

Spiritual Growth Steering Committee

In early 2019, St. Luke's established a working group to further examine ways to encourage spiritual development in the parish. The intent was to build on the recommendations from the Renewal Works team, research and understand spiritual development, and recommend avenues to foster spiritual growth in members. Any recommended courses of action should account for different avenues for spiritual development and different depths of spiritual engagement. The team met over the course of the year and the report will be provided to the vestry in early 2020. The working group members were: Tuck Bowerfind, Brian Cassidy, Geoff French, George Omohundro, Theodora Stringham, Veronika Travis, and Lynn Turner.

EDUCATION

ADULT FORUM

The adult forum continued to meet at 9 am every Sunday. This forum provides brief teaching and discussion on Christian life and current events. Topics are selected by a committee of regular attenders with and the clergy. Topics from 2019 included several explorations of the Way of Love along with Bible study on the book of Romans, an intergenerational Baptism party, praying with the Icon of the Transfiguration and a Lent program focusing on the journey to the cross in the Gospel of Luke. Later in the year we discussed topics in the news and learned Christian practices for Advent.

THURSDAY EVENING BIBLE STUDY GROUP

The Thursday Evening Bible Study Group met every other Thursday night in the library with the goal of gaining a more personal engagement with the Bible. During the year we completed reading *Answering God: The Psalms as Tools for Prayer* by Eugene Peterson and we started reading *St. Augustine's Confessions*. We also used videos and podcasts to further our understanding of the readings.

Thursday Morning Prayer continued at 7:30 am with the leadership of The Rev. Richard Jones and Tom Hargrove.

LENTEN STUDY

The Sunday evenings in Lent study group tackled two related books on the Christian life, with youth confirmation class following *My Faith, My Life*, by Jenifer Gamber, and the adult study group reading and discussing its companion volume, *Your Faith, Your Life: an Introduction to the Episcopal Church*, by Gamber and Bill Lewellis. Both books covered basic concepts in the salvation story, the creeds, Christian history and the history of the Episcopal Church. The program was designed to connect teens preparing for confirmation with others in the church who were discussing the same topics. Talented musicians and chefs again provided a welcoming and relaxed environment for learning together.

FOUR-YEAR ANNIVERSARY/OLD TOWN IRREGULARS

The Old Town Irregulars have been meeting every other week in the Table Talk Restaurant here in Old Town for more than four years. Our ranks include Episcopalians beyond St. Luke's Wellington. We welcome all who are willing to meet for a 7 am breakfast every other Tuesday. Our purpose remains to discern how Scripture might inform and enhance the lives we live today.

The group picks its own course of study. But we were guided along the way by Tuck's gentle instruction. Our group expands and contracts periodically, be we have a core group that has made this a part of their lives. If you seek a communal approach to Bible study and can stop by on the way to work, please consider joining us. We promote an atmosphere of love and respect, along with room to grow in our faith. That has led to a journey of discovery for all of us.

Faithfully,
Brian C. Tringali

CHILDREN'S EDUCATION

Catechesis of the Good Shepard continues to serve children ages 3 through Kindergarten with room 24 serving as the Atrium. We are very grateful to Chris McFarlane who continues to head up the program. In 2019 he was assisted by Hilary Harding and Melissa Brunton. Average Sunday attendance is 4-6 children.

Workshop Cycles (Grades 1-5) form a rotation-based program that covers a variety of Biblical and liturgical topics. Each topic is studied for about 4 weeks using art, movies, storytelling, drama and the kitchen. In 2019 topics covered were "When Jesus was a Child", "What Makes My Church Special", "Marked as Christ's Own: Baptism", "Twelve who Changed the World", "Moses Chronicle" and "What is Worship". We have regular attendance of about 12 children each Sunday from Grades 1-5. We are very fortunate to have the following teachers: Geoff French, Thresa Hope, Shirene Brantley, Reagan Notte, Cindy Slone, Frank Morgan, Katie Prible, John Prible, Matt Miller and Kevin Doupe.

RITE-13

Rite-13 is the first segment of the *Journey to Adulthood program*, where middle schoolers learn along with mentors about the gift of adulthood and the skills they need to journey there. A new group of Rite 13 youth started the two year program this past September with new mentors Emma Morgan and Katie Prible. It is a much smaller group than we've had in the past, which has presented some challenges to weekly attendance, but those that are participating are committed and enjoying being together. The youth groups were very active this fall with pumpkin patch volunteer work, service/cooking projects, and Sunday Christmas activities during Advent.

Emma and Katie have used a few lessons from the J2A planning book, but have found some of the lessons a bit antiquated and difficult to evoke meaningful participation. They are shifting gears to topics of interest to the youth, such as impact of social media, world hunger, climate change etc. and using those topics to discuss how Christian values can have positive impacts on these important issues and concerns. Emma and Katie have found that this approach encourages greater participation and interest in their weekly conversations/activities with those present. Veronika continues to encourage curriculum flexibility, and the program evolves to meet the needs of participants.

J2A

The fall of 2019 marked the beginning of a new Journey to Adulthood (J2A) cohort, with Alan Hope and Molly O'Brien as adult mentors. We have eleven youth in the program, which includes some new participants as well as those who have come up through Sunday school and Rite 13 together. The group has spent much of the fall and winter getting to know each other and form as a group through conversations on the four key areas of the J2A curriculum: self, society, spirituality, and sexuality. We had a very successful Pumpkin Patch in which we sold out of ALL of our pumpkins. We practiced cooperation and service to others by preparing a meal for the Rising Hope food ministry, as they have done in the past and will do again in the spring. We experimented with inter-generational formation by having J2A join the 9:00 a.m. Adult Forum to hear a speaker from Equality Virginia speak about her experience as a transgender person. This month (February) we had a combined J2A and Rite 13 trip to an escape room, in which the 6 youth, Alan, and Molly solved the clues and escaped the room with 19 minutes to spare (of a 45 minute time limit)! Looking forward, we have plans to redecorate the J2A meeting room to make the space our own and we will begin planning for the Urban Adventure which will take place in June.

YOUTH PILGRIMAGE

WHAT IS OUR QUEST? The J2A Class of 2019 had three shared goals as we set out on our spiritual pilgrimage. (1) To experience God through the beautiful and ancient creation which we are called to steward (2) to connect with an indigenous people in North America and to understand more about their spiritual traditions and beliefs, and (3) as a group of young adults in the church, to share and reflect on our own beliefs, and our calling by God to be a part of a vital and living spiritual community.

Our quest took us to mountains, rivers, museums, churches, cultural sites (and even a convent!) in and around Banff National Park, near Calgary, Alberta, Canada. The 12 youth pilgrims were Amelia and Eleanor Fortsch, Elijah Hope, Owen Joachim, Natalie Johnson, Robert Lamb, Morgan Notte, Cara and Calvin Omohundro, Ben and Rachel Pegher, and William Wallingford. The 4 chaperones were Christine and Patrick Kelly, Terry O'Connor, and Kelly Ronayne. Our spiritual leader was Veronika Travis. We were accompanied by a Guide named Shane.

We experienced and interacted with indigenous culture and heritage by doing things like attending a Pow Wow (where we were invited to dance!), visiting a Buffalo Jump World Heritage Site (where our guide made real for us the traditions, community and spiritual connectedness of the Blackfoot Nation with the Creator through the buffalo).

We experienced God in Nature with brisk hikes in the Canadian Rockies, shorter walks in the Canadian Badlands and caverns and dips into warm springs. We took an outdoor adventure with a whitewater rafting trip along a beautiful and pristine river. We challenged ourselves each day to take time to recognize the awesome beauty of the Creation, and our communion with it.

Each evening, after dinners prepared by the youth, we sat down together, and reflected on what it means to be Adult Christians in the modern world, appreciating not only the gifts of nature God gives us, but gifts of courage, resilience,

friendship, forgiveness and gratitude. Our youth led rituals of evening prayer each day -- with readings, prayers and songs they picked out.

Bringing together the three parts of our quest, we came up spirit animal names for ourselves, and wrote and sang a song (whose verses gave us a chance to describe the essence of our spirit animals).



A SPIRIT LIFTING WAY TO PRAY

CHORUS:

Atop the Rocky Mountain ridge,
On a quest to deepen my relige.
Going on a pilgrimage,
With the St. Luke's J2A.
Come along and let's explore,
The Lord in the great outdoors.
What does "God in Nature" have in store?
A spirit-lifting way to pray!

VERSE 1: (Our Spirit Animals)

Patrick: Bird-on-the-lake
Natalie: Tree-you-can't-shake
Veronika: Hare-eating-morsels-and-hopping-round-free
Kelly: Breath-from-the-cloud
Ben: Lone-wolf-in-the-crowd
Morgan: Mammal-with-dorsal-that-swims-in-the-sea

VERSE 2 (Our Spirit Animals)

Rachel: Swims-without-care
Robert: Not-a-lamb-but-a-bear
Elijah: Thidwick-the-moose-and-his-great-mossy-horns
William: Rocky-the-squirrel
Cara: Sea-turtle-girl
Terri: Red-headed-deer-who-is-New-Jersey-born

VERSE 3 (Our Spirit Animals)

Owen: Roar-reaffirmed
Christine: Blueprint-pachyderm
Shane: Bobcat-guides-tours-while-sporting-a-grin
Eleanor: Fast-cat-who's-at-ease
Amelia: Giraffe-atop-trees
Calvin: Calvin-not-Hobbs-is-the-tiger-within

We came back inspired, connected, and more ready to make our faith and spirituality a part of who we are each day.

YOUTH GROUP

The youth group continues to meet for fun activities sponsored by families, including a pool party and a hunger relief service day in the Fall of 2019. Youth are also invited to many intergenerational activities for service and community building. The youth group also served admirably at the Senior Saints Luncheon, and as personal shoppers for the childrens Christmas store. The Pumpkin Patch remained a major group activity in the Fall, encouraging service to the community and fun problem-solving with adults in the congregation. Though smaller than in past years, the youth group continues to have warm fellowship and service when young people are able to join.



CONFIRMATION

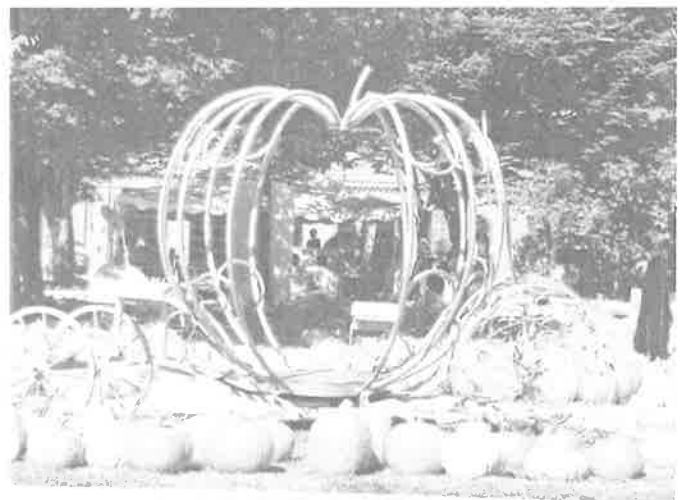
Bishop Susan Goff confirmed 10 young people on June 2. The confirmation class met for six weeks during Lent to form a community and to review material about their Baptismal Covenant, the Episcopal Church and the story of salvation in the Bible. Each young person wrote a very good reflection on their faith and the practices that help them to grow in relationship with God.

2019 PUMPKIN PATCH

The St Luke's Pumpkin Patch was a success yet again, raising funds for the youth program, outreach and the endowment. Many volunteers from the church and the neighborhood helped us to sell all of our pumpkins by October 30th. The patch raised sufficient funds for the youth program even as we shortened the selling time by one week, beginning sales on October 12th.

Other patch highlights this year included:

- A dumpster for the diss-patch so that we better dispose of our pumpkins that are not saleable.
- Continued strong sales of bread, soup and painted pumpkins
- Three new families working in the patch as part of Rite-13 and J2A
- Many friends made with neighbors and the generous support of our community businesses



The patch committee included: Kim Witzmann, Melissa Brunton, Cindy Slone, Alan Hope, Amanda Wallingford, Wendy Joachim, Shirene Brantley, and Amy Moorman. Many other parents, teens, retirees and others in the parish provided crucial help in making this a success. The patch also relies on and appreciates the considerable help from the Scouts and students from area schools who earn service credit by helping with this important community event.

Our net sales in 2019 were \$11,636.04. The patch raised \$9,308.84 for the youth program. Donations of \$1,163.60 each went to the endowment and to the outreach funds of the church.

Veronika Travis for the Patch Committee

COMMUNITY OF HOPE: ST. LUKE'S CIRCLE OF CARE

St. Luke's Community of Hope Circle of Care carried out their mission throughout 2019. The group began its life in December 2017, when eleven parishioners responded to form a Circle of Care. Meghan Biery, Judy Bryan, George Coviello, Charity Emeronye-Swift, Susan Harris, Marjy Jones, Anne Hargrove, Jo MacMichael, Jean Poole, Marge Scherer, and Tim Staples committed to participate in the training and ministry. In 2019, 10 of the members participated actively, while Meghan stepped back due to work commitments. We look forward to the time when she is able to return to an active status.

The Community of Hope is an international Christian community of lay volunteer pastoral caregivers united in prayer, shaped by Benedictine spirituality and equipped for and serving in pastoral care ministries. Training for the cohort consisted of a 14-week, 42-hour curriculum covering topics on Benedictine spirituality, the theology of pastoral care, coping with grief and family systems. We benefited from joining forces with St. Aidan's and Pohick's Circles of Care for the training and learning from their experiences, and in 2019 we met jointly with St. Aidan's Circle of Care several times to further our training and support one another. In May 2019, Marge and Susan attended the Community of Hope Mid-Atlantic regional weekend retreat.

The leaders of the group met several times a month with the Tuck and Veronika to review with them who might need to be visited or called. We meet monthly to share a meal, pray and learn together, nurture our spiritual growth, and support each other as we provide pastoral care to the St. Luke's community through visits and educational opportunities. In November 2018 the group, led by George Coviello, presented an Adult Forum on the loneliness epidemic, a topic discussed among the group during the year. In 2019 Marge Scherer proposed to bring Larry Houk to St. Luke's to discuss how to talk with loved ones about end-of-life decisions, and he is scheduled to appear on Feb 2, 2020. The group made over 100 calls (in person or on the phone) in 2019.

As part of the covenant with Community of Hope International, training is offered at least every two years. If you are interested in this ministry, contact a member of the Circle of Care, or speak with Veronika.

- Marjy Jones

THE MINISTRY COMMISSION

In 2019 our continuing membership was Tom Hargrove, Dick Larm, Linda Riley, Tom Stallman and Eunice Theobalds. We met approximately monthly in members homes and kept up to date with emails.

The purpose of the Commission is to be a "think tank" of sorts concerning activities that could be held at Saint Luke's to help to equip, encourage, challenge and support all parishioners in their efforts to be more intentional and effective Christians in their daily lives. During 2019 several of our members participated in the work of the Adult Education Committee. In this role they helped determine the content of the Adult Forums and other educational events. They also conducted several Adult Forums.

As usual, we supported the Labor Day Sunday activities, including recruiting the lay speaker for 2019, Chuck Silva.

In 2019 we also continued to recommend periodic use of the Litany for the Ministry of the Laity, and reminders in Sunday bulletins to pray, during communion time, for God's help related to individual needs in the week ahead.

Please contact any member with questions, comments, suggestions or to explore joining us. We are particularly looking for another employed man or woman to become a member.

Submitted by Tom Stallman

WORSHIP

We continued to share in the sacraments, pray for the world and ourselves, and be strengthened for service by hearing the gospel proclaimed. Many people participated in offering beautiful worship to God and in making our church a welcoming sanctuary. This year, we also created a third Sunday youth service that balanced the needs of young children to worship with the whole community and provided opportunities for youth to read, minister the chalice and lead the prayers. The service continues to be evaluated in the worship committee.

In addition to the 8 and 10 o'clock services on Sunday morning, we offer a monthly Third Thursday Eucharist at Paul Spring Retirement Community and weekly Thursday Morning Prayer. All are welcome to join us.

The Altar Guild is a dedicated group of people who prepare the altar and chancel for all the services throughout the year. There are 4 Teams, each meeting once a month for an hour on Saturday mornings with a quick clean up after each service on Sundays. A fond camaraderie is shared by all.

Tasks include:

- Coordinating with Admin and clergy for special events/services;
- Polishing the brass every week and the silver once a year;
- Setting the book marks, for the weekly readings, of the Gospel and Lessons for the day;
- Straightening the books in the pews to present an orderly appearance to the parishioners entering the nave;
- Placing the proper dressings for the Chalice and Paten of the Colors of the Liturgical Seasons.
- Setting out the needed wafers and wine for all Holy Eucharist services.
- The Director orders all needed supplies and flowers when necessary.

Flower Guild ministry: Our floral designers, prepare the altar with fresh flowers throughout the year. Altar flowers have an added dimension to the worship service, not only do they create beauty, the flowers are then given to shut-ins, folks celebrating momentous occasions and special events, or just someone who needs a "pick-me-up". The Guilds works together to prepare the altar for the high feasts of Easter and Christmas. All of the flowers are purchased from donations.

Good friendships are formed on the Guild Teams. Shared duties and gladly filling in for absences. We welcome new members, Sally Tucker and Diane Lamb. Diane has volunteered to join the ranks of the Flower Guild plus learning the monthly tasks of her Team. And said farewell to Eileen Deaver. The Guild is running low on members. Two of the Teams have only 2 members each. We gather for fellowship at member's residences, a good time to reacquaint with the whole Altar Guild. All are welcome to join us.

Eucharistic (Chalice) Ministers and Lectors

St. Luke's is blessed to have 28 individuals who are called to proclaim the word each Sunday by voice and action! Eucharistic Ministers are licensed by the Bishop to administer the sacrament of wine at services of Holy Eucharist and Lectors are assigned to read Scriptures at each service. During 2019 we added 4 additional youths to help with the 3rd Sunday of each month's youth service. In addition we have a family that serves at Paul Springs for that monthly service. We are always looking for new people to fill out the ranks of all ages to join the group. If you feel called to serve please contact Veronica or Lisa Maple.

The Acolyte Guild

As of December 31, 2019, the Acolyte Guild had 26 members serving on five teams led by the senior member of the team who serves as crucifer. Team leaders in 2019 were Juliette Flowers, Nick Hamilton, Dylan Kleiman, Khloe Krizek, Robert Lamb, Morgan Notte, Rachel Pegher, and Ben Pegher. Many parents of acolytes, as well as lectors and chalice ministers, have also assisted on Sunday mornings, and we especially thank Cindy Slone.

In 2019 we bid goodbye to Khloe Krizek and Juliette Flowers when they graduated from high school and left for college. We also welcomed adults to our ministry, including Alan Hope, Frank Morgan, and Susanne Reynolds. We look forward to expanding our roster with more youth (4th grade and older) and adults in 2020.

On behalf of the congregation, I appreciate the hard work and dedication that our acolytes contribute to church services in rotating teams at 10am and at holiday and special services.

Respectfully submitted,
Beth Morrissey

OUTREACH

“What does love look like? It has the hands to help others. It has the feet to hasten to the poor and needy. It has eyes to see misery and want. It has the ears to hear the sighs and sorrows of men. That is what love looks like” St. Augustine

Thanks to the commitment of Saint Luke’s Church clergy and parishioners, the outreach programs at St. Luke’s continue to grow and expand efforts to help those in need in the concentrated Route 1 corridor and Mount Vernon Community. The volunteer support from St. Luke’s church and our greater community have given St. Luke’s the reputation of being proactive in building awareness of poverty and have provided extensive opportunities for concerned members of our community and church to help in a tangible way.

St. Luke’s outreach efforts touch the lives of many in need of all ages and backgrounds. St. Luke’s parishioners have served individually and collectively to offer tremendous volunteer and financial support of outreach programs in 2019.

This year more than 200 individual volunteers and/or volunteer families filled volunteer positions to help make St. Luke’s outreach efforts a success. The volunteer positions include delivering food to shut-ins, donating food, cooking and serving food, knitting blankets and providing shelter and care to our neighbors. Most all of these efforts were conducted in the Mount Vernon community.

St. Luke’s Church is fortunate to have a generous and caring congregation and community with a willingness to support those in need, including the following individuals who served on the Outreach Committee as advisory members or program managers during 2019:

Tuck Bowerfind	Adele DePolo	Anne Hargrove	Dixie Hougen
Monty Hougen, Treasurer	Paul Krizek	Becky Littlepage	Jo MacMichael
Dawn McMillin	Sue Rogich	Zelda Shute	Charles Kinney, Vestry Rep
Sue Webber, Chair			

The Outreach Committee continues to build on existing programs and has created new programs in order to broaden the scope of support and assistance we can provide to the community.

SPECIAL OFFERINGS AND GENERAL OUTREACH FUNDS

The Outreach Committee oversees two funds: Special Offerings and General Outreach. A combined total from both of these funds totaling \$22,194.7 was disbursed to help those in need in 2019.

Special Offerings: Special Offerings are donated at St. Luke’s on Ash Wednesday, Maundy Thursday, Good Friday, Easter Sunday, Thanksgiving and Christmas. These offerings are distributed to local charities as well as a few other select charitable groups.

In 2019, St. Luke’s parishioners donated \$12,824 via special offerings. It is the goal of the Outreach committee to use the Special Offering funds to support local charities and to distribute funds as soon as possible after receiving them. The Outreach committee recently voted to distribute the funds donated during Thanksgiving and Christmas to several local charities. The majority of funds were split between United Community, Rising Hope, Good Shepherd Housing and New Hope Housing.

Special Offering Income (Highlights):

	2018	2019
Ash Wednesday	\$922	\$644
Lent	\$490	\$325
Good Friday	\$1,851	\$1,250
Easter	\$4,054	\$5,235
Thanksgiving	\$1,130	\$830
Christmas	\$11,314	\$4,540

General Outreach: The General Outreach funds are accumulated from various sources: special events such as the Craft Fair, the St. Patrick Day Benefit Concert, and the Spring Boot Sale. A percentage of the money raised from various parish activities such as the BBQ, Pumpkin Patch, car washes and other outside events provide the committee the opportunity to supplement the Special Offering funds to help address the needs of our community. Individual parishioners also make personal donations to this fund and/or specific outreach programs.

The Outreach Committee votes on the distribution of both the General and Special Offering funds.

The closing balance of the Community Outreach General fund as of December 31, 2019 is \$9,231.

General Outreach Raised Funds (Highlights):

	2018	2019
Craft Fair	\$4,103.03	\$3,925.72
St. Patrick's Day Benefit Concert	-	\$2,072
Pumpkin Patch	\$1,650	\$1,163.60
BBQ	\$539.00	\$608.50
Car Washes	\$560.00	\$608.00
Contributions for Rising Hope	\$600,00	\$860.00
Boot Sale	\$248.00	\$339.00

Summary of Outreach Contributions

Highlights of key organizations that St. Luke's Outreach Committee supported from both the Special Offering and General Outreach funds include but are not limited to:

Organization	Total Contribution
United Community (including Adopt A Kindergartner)	\$4,004.00
Rising Hope (including food purchased by St. Luke's parishioners)	\$5,760.00
New Hope Housing (including food purchased by parishioners for Kennedy Shelter)	\$6,467.00
Good Shepherd Housing	\$3,500.00
Episcopal Relief (includes contributions made for hurricane relief efforts)	\$581.00
Young Life (Summer Camp Scholarships)	\$650.00

While the contribution numbers are strong, they only tell part of the St. Luke's outreach story. Below are a few highlights of some of the Outreach events and volunteer work that St. Luke's parishioners do in our community.

OUTREACH PROGRAM HIGHLIGHTS - 2019 St. Luke's Child Christmas Wish Program

The Christmas season is full of opportunities to spread joy to many that are alone or in need of knowing someone cares. The Christmas gift program was restructured this year to focus primarily on providing Christmas gifts to children in our community. The new program enabled us to support 60 more children in 2019 than in 2018. St. Luke's 2019 Child Christmas Wish Program has given 100 volunteer families the opportunity to spread Christmas Joy to over 173 children.



Caseworkers and Social Workers from eight different local schools carefully identify children who do not receive gifts or Christmas assistance from other area gift programs. They work with the children to create a list of items that they would like to receive for Christmas. Volunteers purchase all or some of the items listed on a child's wish list. Each child's family also receives a gift card to purchase groceries.

With the Adopt-A-Family program it is rewarding to know the gifts we give to these children go directly to them and although we do not know these children, we feel a bit of kinship to them through shopping specifically for them.

SANTA'S HELPER GUARDING THE CHILDREN'S GIFTS

VIC HOP (Ventures in Community Hypothermia Outreach Program)

Over the eight Wednesday evenings in February and March of 2019, a total of 42 members of St. Luke's donated their talents and time to support our homeless neighbors during the cold winter months. Several homeless residents of Fairfax County have died of hypothermia in recent years, prompting Fairfax County Office to Prevent and End Homelessness to coordinate with the faith community to provide emergency housing during the winter.

St. Luke's members cooked and served meals or volunteered to spend the night as chaperones at the Rising Hope Methodist Church on U.S. 1 for up to 24 homeless men and women. "Dear God, please bless these folks who've cooked such a wonderful meal for us," one VIC HOP client prayed last year at the start of our meal together.

Since 2006, VIC HOP has provided homemade hot food and warm shelter to homeless adults during the coldest months. It has also provided a transformative experience for St. Luke's to live their faith by forging a bond of affection and concern with our less fortunate neighbors. Our commitment to this ministry has become a source of holy pride for St. Luke's.

The following St. Luke's members in 2019 volunteered their time and talents as cooks or overnight chaperones to the VIC HOP program: Barbara Bonnet, Tuck Bowerfind, Shirene Brantley, Laura Catron, Joe Christadore, Eileen Deaver, Joyce Delaney, Sally Ferrett, Jane Flowers, Lee Gilmore, Hilary Harding, Anne Hargrove, Thomas Hargrove, David Helvey, Thresa Hope, Joan Huffman, Skip Jones, Reisa Kall, Diane Lamb, Cathleen Lewis, Becky Littlepage, Jo MacMichael, Richard Maple, Tony Mazzocoli, Richard McFarland, Christopher McFarlane, Amy Moorman, Kathryn Morrison, George Omohundro, Laura Pegher, Joe Sciacca, Cindy Slone, Sarah Tatum, Eunice Theobalds, Veronika Travis, Michael Vardac, Amanda Wallingford, Susan Webber, James Wentworth, Tracy Wentworth, and Gerry York.



THE MOLLYHAWKS

St. Patrick's Day Benefit Concert

In 2019, the Outreach Committee brought back a music event to raise funds to supplement the General Outreach general funds. The Mollyhawks performed traditional Irish and maritime tunes to a full house in celebration of St. Patrick's Day. The proceeds helped to ensure that we had adequate funds to support programs such as Rising Hope Lunches, Kennedy Center food pantry shopping and the Adopt-a-kindergartener backpack program.

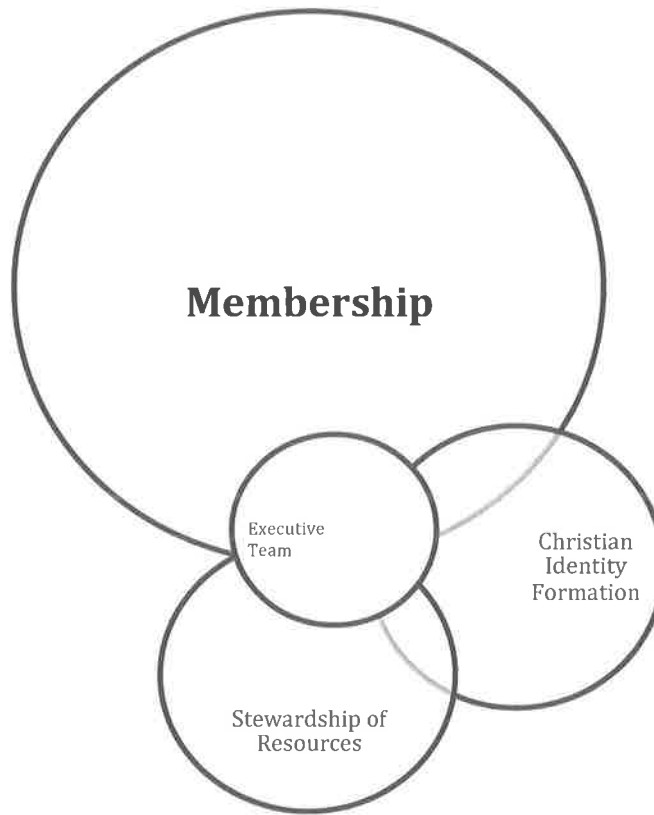
Boy Scout Troop 65

St. Luke's has sponsored this troop for 60 years. It continues to strive to provide a pathway and support for teenage boys to develop into mature young men with leadership capabilities and a focus on assisting others. The troop volunteers regularly and has been quite active in conducting food drives for our community in need.

Thank you for your support and generosity in helping those in our community who are in need. All are welcomed to join the Outreach Committee or volunteer for an outreach program.

For more information, contact Sue Webber, 703.799.0539, sjwebber@att.net

MINISTRIES OF ST. LUKE'S



❖ MEMBERSHIP

Developing the human resources of the parish with primary attention to fostering friendly relationships of mutual affection and support among members of the congregation and members of the community in which we minister. Membership has been exploring the INVITE, WELCOME, CONNECT strategy. Melissa French, Reisa Kall, Brian Tringail, Cathy Lewis, and Amanda Wallingford are the Vestry members assigned to this ministry area.

With the objective of enhancing fellowship and embracing our spirituality at St. Luke's, the Membership functional area of ministry includes Membership, Communications, and Misconduct Prevention. The following groups, teams and programs fall under the Membership functional area: Greeters, FISH groups, Fellowship Coffees, Ladies 1st Tuesday, Men's Wednesday Nights, Newsletters/Website/Media. Special events also included within Membership are the: Annual Picnic, Catesby Jones BBQ, Choir Breakfast, Easter Vigil/Dinner, Shrove Tuesday, St. Luke's Fall Retreat, and the Senior Saints Luncheon.

INVITE-WELCOME-CONNECT

Several of us from the Vestry Membership subcommittee made our way to nearby Pohick Church during the warm months to attend a workshop on Invite-Welcome-Connect. This was an Episcopal workshop for local churches. Part of any workshop is fellowship and we enjoyed hearing about the challenges that an historic church like Pohick faces, as most people who drive by the Route One location assume it is a museum.

The I-W-C ministry began at Sewanee: The University of the South. This the same institution that oversees EfM or Education for Ministry. We all learned so much there. Much of that learning made us realize that while we do a tremendous job here at St. Luke's welcoming those who come through the door and connecting once people join us, our efforts to go out into the community to *invite* could use some bolstering. While we don't want to drop what we do well and improvements can always be made, we realize that we need a special focus on the invite part. As a result, as I retire from Vestry duty this year, I plan to focus on invite activities. If you would like to join me, grab me after church or e-mail me at btringali@tarrance.com.

COFFEE/ONE OF OUR MOST IMPORTANT MINISTRIES

There are some unsung heroes among us who act as the quiet missionaries keeping things going. This is not limited to the Alter Guild, although their service is a blessing as well. In a world culture that seems to be fascinated by the coffee bean in all its various disguises, St. Luke's culture is along for the ride too.

As you know, our unique St. Luke's culture is built around coffee and the fellowship developed over a simple and good cup. This ministry is about simply making coffee for parishioners – just good coffee for good people! So when you see someone replenishing the pots, take a moment and say thank you. Coffee at St. Luke's has come to be an extension of our passing of the peace during the regular service. Those who visit comment on it. Human interaction as we meet over a good cup of coffee is a part of God's plan. No wonder he gave us this miraculous bean to enjoy.

Here is a big thank you to all who provide the java juice.

-Brian C. Tringali

ARE YOU PART OF A FISH GROUP?

FISH Groups are informal small groups that meet merely to have dinner on a periodic basis. Sure, we might call everyone together during the gathering to join in a short prayer, but there is literally no agenda beyond that. Groups determine how often they want to meet and rotate between people's homes.

About a year ago, St. Luke's kicked off the new set of groups and we encourage you all to keep it going as we enter the new year. The kick-off event was held in the parish hall early in the year and everyone who signed-up was assigned a color – just a group designation. The idea is for each of the groups to grow, so we encourage each group to invite new members. If the group gets too big, just consider dividing up again – and we can help with that if you need us to do so.

If you and/or your family want join in on the fun and become a part of a FISH group, just let someone on the Vestry know. Let the fun begin!

Membership Committee



FOOD ON TRUCKS

Did you get a ticket? Were you part of the fun? You may have noticed that during the "back to church" festivities and earlier in the year we were visited by food trucks. A lot of grilled cheese sandwiches and BBQ was consumed in our parking lot during these visits. This is the kind of fellowship we can never get enough of here at St. Luke's. Breaking bread has always been a part of the Christian faith.

Food trucks are a part of what church leaders hope with become a continuing tradition. Many of us already associate food with love, even when we do not think about it. We hope to nourish our souls as we nourish our bodies and celebrate each other. It helps to do all this outside of the building and enjoy the weather. And so far, we keep having great weather at these events.

Look for another visit by a food truck in the coming months and bring your appetites.

Membership Committee

BASEBALL GAME

Twenty-five St. Luke's baseball fans took a boat ride to Nat's Park on the Baseball Boat from Potomac Riverboat Company and enjoyed a great evening. Remember when the Nat's were floundering early in the season. Well divine intervention occurred since we saw a victory and the start of the Nat's run towards World Series Champions! GO NATS

LADIES' FIRST TUESDAY

The Ladies' First gatherings are on the first Tuesday of every month in St. Luke's library from 6:00 until 8:00 PM. All women of the church and their friends are invited and encouraged to attend the evening of fun and fellowship. Come when you can; leave when you must! Snacks and beverages are provided by attendees.

SHROVE TUESDAY

The 2019 Pancake Supper provided everyone the opportunity to overindulge in pancakes, cheese grits, baked apples and sausage patties. This year's Pancake Supper is on Feb 25 so get ready to once again overindulge before Lent. Food is served starting at 5:30 P.M.

MEN'S GRILL NIGHT

Men's Grill Night (formerly known as Men's Steak and Beer) is a monthly gathering on the 4th Wednesday. This men's fellowship activity affords the opportunity to socialize while enjoying a beverage of choice and grilling food of one's choice. Good conversation abounds both before and during the meal. All are welcome both young and old.

BBQ

We had a great year, and our totals are as follows: Gross \$9,874.29 Profit \$6,084.98. So mark your calendar for that first Saturday in May...see you on the 2nd!

PARISH RETREAT

Each fall parishioners are called to travel approximately 2 hours west, to the edge of the Blue Ridge Mountains, for a weekend retreat at Shrine Mont the Diocese Retreat Center in Orkney Springs. This annual retreat allows everyone a chance to relax, unwind, and reflect in the rustic accommodations. This year we had housing for 60 people. The group spanned all generations from two of our youngest members, the Bradley twins; to some of us who have seen a few birthdays! The morning was split into two groups with the adults meeting and the youth building and competing in an obstacle race to emphasize that "God makes us strong"! The adult activity involved Bible stories related to hospitality and reflections on our own spiritual practice of hospitality. *Invite, Welcome, Connect*, which is St. Luke's strategy for membership engagement, was introduced to some members as well. The morning activity was followed by a hayride, trip to Route 11 potato chip factory the wine tasting/social hour and the evening topped off with an ice cream social Saturday night. Sunday featured service at the outdoor shrine. The cost per person is off set by the profits from the annual St. Luke's BBQ. Please join us October 2-4 2020. Look for registration info early this year as Shrine Mont has changed their registration procedures. Last year a first time retreat participant commented that it was the best time they had experienced in a long time. Don't miss out on your opportunity to share in this experience!

SENIOR SAINTS LUNCHEON, NOVEMBER 2019

The senior saints lunch was very successful. Sue Reynolds planned every detail. Several saints were served a restaurant-type luncheon with the help of the wonderful vestry and especially the young people of the parish who were so thoughtful in serving the seniors. Chef Jeff Bruce did an outstanding job of preparing the main course, chicken alfredo and making everything on the tables look beautiful--a meal that was delicious and a delight to the eyes as well. The best thing that happened was that the vestry and young people also sat down and ate lunch among the senior saints!

REV. TUCK BOWERFIND RECEPTION, NOVEMBER 2019

It is almost hard to write this as it is a reminder of a sad goodbye to Tuck and his family.

On Sunday, November 10, 2019, St. Luke's celebrated Reverend Tuck Bowerfind's 16 year tenure at St. Luke's with a joyful reception after the 10:00am service. We bid a fond farewell to Tuck, Delea, Tiffany and Matt, George, Dorothy, and Archer. Tuck joyfully carried a photo of Elizabeth with him during the reception as she was unable to attend due to her travels overseas to Greece for her University program. We also bid a very sad goodbye to our fondest four-legged member of the Bowerfind family, Nellie, as they all start a new chapter to their lives in Lexington, Virginia. Reverend Ketlen Solak and Reverend Grace Pratt were in attendance as were many current and past parishioners and friends. The parish hall was bursting at the seams. It was a joy for Tuck and Delea to see everyone and a wonderful time was had by all.

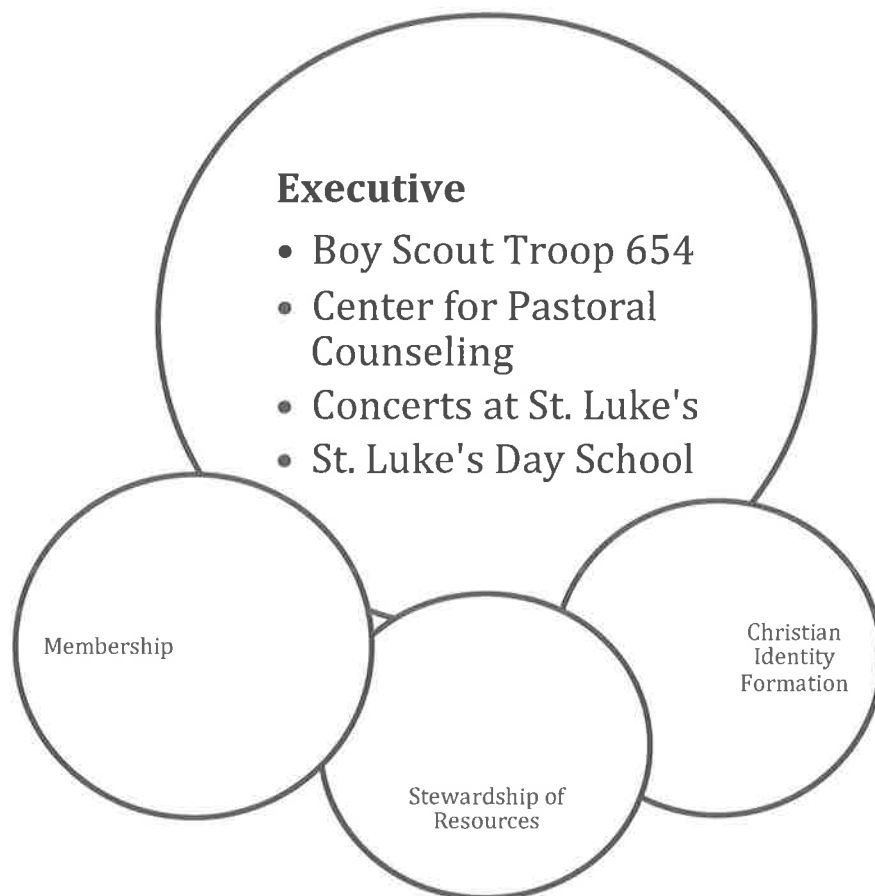
Several members of the Vestry and parish planned the event to include plenty of platters from Wegman's and two large cakes. Several parishioners also made Tuck's favorite dishes and desserts that were set up on a table labeled "Tuck's Treats". The goodies consisted of home baked breads, delicious cheeses and fresh apple slices, homemade lemon bars, chocolate chip cookies, brownies, beautiful French macarons as well as savory dishes. Nary a crumb was in site at the end of the party. There were several heart-felt, emotional as well as some very humorous speeches from Frank Morgan, Cara Omohundro, Drew Hutcheson, Tom Hargrove, Sue Webber, George Coviello, Tom Stallman and Adele Depolo. George Omohundro graciously served as our MC for the morning. A purse gift was presented to Tuck along with a picture of our St. Luke's family that attendees signed wishing Tuck and Delea best wishes and good luck (A copy of the photo is included in this report).

Kate Petrova-Weber led the children's choir in a beautiful singing tribute to Tuck – which he thoroughly enjoyed. Event Photographer Laura Hatcher, captured the day in photos so our church family and the Bowerfind family can remember the joyous event.

While it was a celebratory reception, everyone attending knew that we would not be seeing Tuck the following Sunday, and there was some sadness. We said goodbye to Tuck and his family after many years of dedicated service to the St. Luke's community, and the larger community outside of St. Luke's in Fairfax County, VA. They will be dearly missed.



MINISTRIES OF ST. LUKE'S



❖ OTHER CHARTERED ORGANIZATIONS



UNITED THANK OFFERING of the Episcopal Church Women -- Through daily prayer and thankful giving, we reach out to the world to help others. The United Thank Offering is a spiritual and financial partner in the mission work of The Episcopal Church. The spring and fall In-Gatherings at St. Luke's for 2019 collected a total of \$1,471.84. The fall in-gathering included nearly 30 individual donators, a record for St. Luke's. This is then sent to the Diocese of Virginia and the total from the Diocese is sent onto the National UTO and the Domestic and Foreign Missionary Society offices. Those Blue Boxes add up! Thank you to all for your thankful prayers and contributions. The funds then are distributed via Grants. Grant applications are sent into the national UTO committee for approval. Grant applications are available on line at www.episcopalchurch.org/UTO

YOUTH AND ADULT SUPPORT GROUPS

St. Luke's hosts support groups for youth ages 8-13 and parents/allies of the LGBTQ+ community on the third Tuesday of each month. Beth Morrissey and a neighborhood mom facilitate the adult group. In 2019, Molly O'Brien and Delea and Tuck Bowerfind led the youth group through October. We are fortunate to have two community volunteers, with vast experience with the LGBTQ+ community and training, join Molly in supporting the Youth. The Youth Group was thrilled to join GenOUT, the teen chorus sponsored by the Gay Men's Chorus of Washington, DC, in a concert hosted by Concerts at St. Luke's in May 2019.

These groups have grown the past few years, with the youth and adults offered a safe, confidential, and supportive opportunity to explore issues surrounding gender identity, sexual orientation, and navigating life as an LGBTQ+ individual and/or ally. Our youth group for ages 8-13 is the only one in the area meeting the needs of this age group. Participants come from around the DMV, including as far as Frederick, MD and Stafford County, VA, and they are grateful for St. Luke's hospitality.

SAINT LUKE'S DAY SCHOOL

**"There are men and women who make the world better just by being the kind of people they are.
They have the gift of kindness or courage or loyalty or integrity.
It really matters very little whether they are behind the wheel of a truck or running a business
or bringing up a family. They teach the truth by living it." – James Garfield**

In June of 2019, St. Luke's Day School updated its playground facility with the outstanding help of Deanna Lockett and Kate Pacious, who designed a wonderful landscape plan and helped get plantings at cost for the playground. Then a group of dedicated parents came in on a Saturday morning and we planted beautiful grasses, azalea bushes and more. By the time the children returned in September the playground was lush and became a new science investigation of the new plantings. St. Luke's Day School has offered scholarship aid to children as a function of our community outreach.



The Day School is dedicated to the philosophy of providing a loving and nurturing environment, under the guidance of a qualified staff who understand the developmental needs of the pre-school child. We believe that through a positive atmosphere, an enriching curriculum, the appropriate physical facilities and the proper resources, a child will have the very best opportunity to grow while developing a sense of self.

Directed by Anne Marie Coggins, our program prepares the children to recognize and use their intellectual and creative abilities in learning tasks. The children are introduced to a balanced program of interaction with friends in both teacher-directed and child-directed experiences. The daily schedule includes free choice of time spent in play and center activities, circle time and music, Spanish and creative movement classes once a week. Rev. Veronica has offered a wonderful Chapel service each week. The children are taught to light the candles and their birthdays are recognized with a birthday blessing.



Current enrollment for the 2019-2020 school year stands at 115 students. Classes are offered for children ranging from 2.5 years to kindergarten. School hours are 9am to noon, with a Junior Kindergarten class offered 12:30pm to 3:30pm. The Day School offers an Extended Day Program for those families in need of part-time afternoon care. Volunteer participation of parents is strongly encouraged, as all benefit from the sharing of time and talent. Parents are invited to help with Special Days and to be Mystery Readers in the classrooms. Special Days this year included Breakfast with Dads at the Pumpkin Patch, Breakfast with Santa, Dancing through the 90's, Beach Days, and Brunch with Moms.

Anne Marie Coggins, Director



Center for Pastoral Counseling

THE CENTER FOR PASTORAL COUNSELING

The Center for Pastoral Counseling has had a presence at St. Luke's since 1966, and we continue to be grateful for the ongoing support of the congregation. Because of that support, we are able to offer professional counseling and psychotherapy using a sliding fee scale. When circumstances warrant, people may pay less than the going rate in the community. During 2019, the three CPC clinicians who see clients at St. Luke's provided more than 600 hours of service. Occasionally we consult with staff and can give presentations on various mental health topics to groups and classes.

We invite you to peruse our website: www.pastoralcounseling.com to learn more about CPC. Should you have questions about our services, please call our referral coordinator at 703-903-9696, ext. 290.

Carey Gauzens, LCSW
Tamara Philbin, NCC
Nancy Scott, LCSW

CONCERTS AT SAINT LUKE'S

"Music is the divine way to tell beautiful, poetic things to the heart." —Pablo Casals

Concerts at Saint Luke's offered five concerts last year—three with paid admission, and two free to the parish and community. Regular season concerts included the Beau Soir ensemble (flute, viola, harp), John Bullard on classical banjo, and for the third consecutive year, Words&Music (vocal quartet with piano, violin, and assorted percussion) presenting their holiday-themed "Star of the Morning" concert. The free concerts included GenOUT, Washington's only LGBT youth chorus (of which our own Dylan Kleiman is a member), and, as part of their East Coast tour, Marywood University chamber singers.

The Concerts at Saint Luke's committee (Carol Bloom, Bobbi Bruce, Hilary and Matt Harding, Suzanne Reynolds, Scott Solak, and Marty Young), on behalf of the parish, works to support local musicians by offering them a beautiful space in which to perform. Modest ticket fees are charged for the regular season concerts, which help to pay the musicians' fees. Saint Luke's parishioners and residents of the Mount Vernon community and beyond are offered hospitality and warmth, and the soul-sustaining joy and excitement that music and the performing arts can uniquely provide.

Additionally, the free concerts offered in 2019 allowed opportunities for youth to perform at and to be the beneficiaries of the hospitality of Saint Luke's, and demonstrated the commitment of Saint Luke's to social justice and the upbuilding of future generations for the glory of the kingdom of God.

Concerts at Saint Luke's committee, Scott Solak and Suzanne Reynolds, co-chairs

TROOP 654

2019- MORE TRANSITION AND LOTS OF PROGRESS

Hello – I'm Charlie Hooker, the new Committee Chair for BSA Troop 654. In February 2019 I replaced Randy Neal as Committee Chair. I'm responsible for overseeing our many adult volunteers and representing our Troop at official BSA meetings and activities. However, I'm not the only new leadership in our Troop. The Troop elected a new Treasurer in June, created an outreach position for incoming scouts in July, and selected a new Scoutmaster in December.

Why was there so much change in 2019?

I'm proud to say nine scouts earned their Eagle Rank in 2019. As these scouts finish their senior year of high school (or start their freshman year in college), it was time for their parents to step aside and new parents to volunteer. Although I've only had a year to get to know many of these young Eagle Scouts, it has been a rewarding experience. It was a

pleasure to participate and review their Eagle Projects – ranging from landscaping and bridges to a nursery school playground, a new play kitchen for UCM, welcome baskets for a women’s shelter, two repair projects for the National Park Service (one at Fort Hunt Park and bridge repairs along the Parkway), and repairing the signage at Hollin Hall.

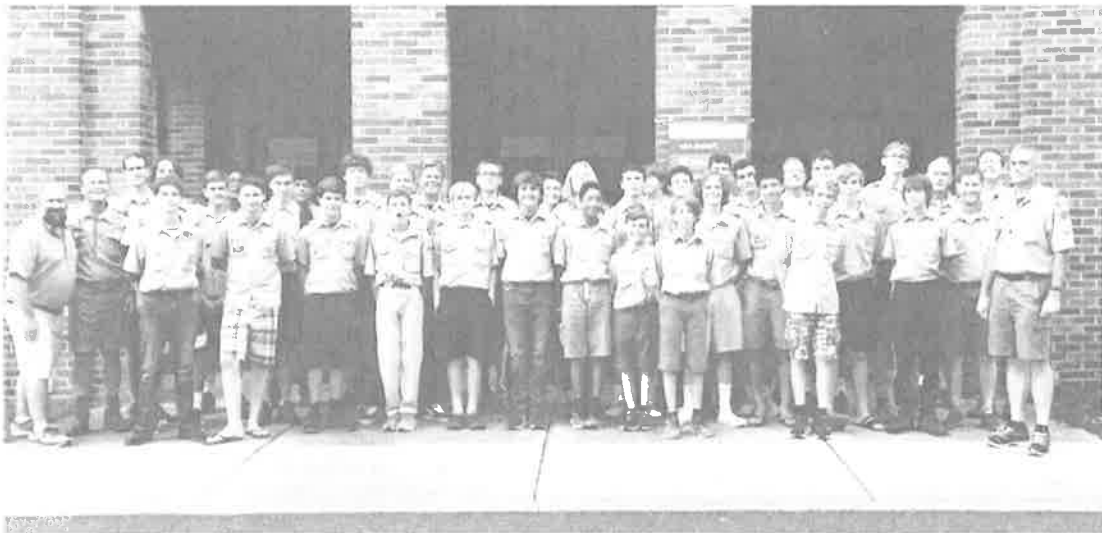
In addition, 34 scouts participated in “Scouting for Food” over two weekends in November – (card distribution and food collection) collecting an estimated 1,800 lbs of food.

Did we spend any time in nature?

Eighteen scouts spent a week at Camp Rodney on the shores of the Chesapeake, near Havre de Grace and a team spent a week at Philmont Scout Ranch in New Mexico. In addition, there were weekends of ziplining, biking, hiking, and canoeing. In December, our Troop earned a medal for camping and completing an 8.5 mile hike around Valley Forge. The mild weather prevented the scouts from experiencing the snow just like General Washington and his troops – but a couple hours hiking in the rain in 40 degree temperatures made them appreciate the comforts of home and the freedoms we have today.

What are my goals for 2020? (in no particular order)

- 1) Grow the Troop – We had a large class of scouts move on in 2019. We’ve taken steps to offer new services to incoming scouts and parents. We’ve also improved our visibility among the area cub scout packs.
- 2) Provide Training for New Parent Volunteers – Several parents have volunteered to become assistant scoutmasters, but still need to complete the training. We are assessing additional needs, such as CPR training and other programs.
- 3) Increase cooperation/volunteerism with St. Luke’s – In 2019, 15 scouts participated in the pumpkin unloading and 12 scouts participated in Breakfast with Santa. In 2020, the Troop wants to help with the spring BBQ. In January 2020, I met with Rev. Veronika Travis. As a result, I plan to further develop the idea of including parishioners in one of our merit badge programs and trainings (such as CPR).
- 4) Redo the Troop 654 Bulletin Board in the Parish Hall – We would like to re-construct the entire bulletin board in 2020. For example, we’d like to build a new display to include some of the Troop Chartering Documents that we uncovered from the 1950s. This is still a work in progress, but I look forward to meeting with Wardens or other leaders later the appropriate time.



THE TREASURER'S REPORT

ACCOUNT INFORMATION

The church financial assets are held in several different accounts to best serve the use of the funds. Day-to-day operations have been carried out through a checking account at Burke and Herbert Bank. We do earn a small amount of interest on our deposited funds. The capital fund sum (\$144,000) transferred four years ago to an interest bearing diocesan fund grew and some of this investment was used to pay off the capital improvement loan this year. There is an investment account with the Diocesan Trustees of the Funds, which includes our Endowment Fund. At Merrill Lynch we have a fund management account for receiving and selling gifts of securities. Further information on the balances and activity of these accounts in 2019 is shown on the **Account Activity Summary**.

OPERATING FUND

Income not designated for a special purpose is received in the Operating Fund and then the various church expenses such as payroll and utilities are paid out. The major income source is from the pledges of the congregation. More detail is available on the attachments, one of which shows the Vestry approved **2020 Budget and the 2019 Budget**. A second attachment presents the **2019 Budget/Actuals and 2018 Actuals**. This year we discovered that several pledge checks mailed to us at St. Luke's had been stolen from our mailbox before we could get them. This accounts for several thousands of pledge payments that were not ever recorded and some have been found to have been cashed by the thief. We are currently working with the local police to hopefully apprehend the culprit. We have since replaced our mailbox with one that locks to prevent any further losses. If your church statement does not have all of your known contributions from 2019, please let me or Sue Bentley know so we can try to track down whether it is our error, or additional stolen checks that we need to report.

DESIGNATED FUNDS

From time to time special purpose, or designated, accounts are set up. These vary considerably in dollar size and rate of activity. For a list of designated fund accounts, 2019 balances and notes see the attached **Balance Sheet**.

CAPITAL FUNDS

This fund was initiated in 1998 to receive the proceeds from the new initiative to obtain funds to pay off the mortgage, to install an elevator for access, to restore/replace the organ and to replenish the funds for major repair/renovation of the building and grounds. The main campaign took place in 1999, but was re-publicized in 2001 for new and increased pledges. The capital funds now take in the revenue from the steeple tower and are allocated for maintenance and repair as well as interest on the FOSL loan. In 2010 a new Capital Campaign, Fabric of Saint Luke's (FOSL) was launched. These funds were designated for specific building improvements as defined by the FOSL committee. Contributions to FOSL stopped in May 2016 and no further contributions are expected. The plan created by the strategic finance committee in 2017 to pay off the remainder of this loan by October 2019 was successfully accomplished this September, one month ahead of schedule! A new Capital campaign, Building for Ministry, was started this year focused on additional improvements desired at St. Luke's and we are currently accumulating and tracking funds into this new designated account.

OUTREACH GIVING

St. Luke's Church devotes much of its income, both operating and designated, to Diocesan and charitable work beyond the parish. It is surprising to assemble all the pieces and note both the amount and breadth of these good works. The detail and total giving for 2019 can be found in the **Outreach Giving Section of the Annual Report**.

Alan Hope, Treasurer

**St. Luke's Episcopal Church
Treasurer's Report
December 2019**

December Summary 100% of the year)

Operating Income: \$66,172 (to date \$517,116 or 95%)
Operating Expense: \$33,351 (to date \$533,560 or 96%)
Year to date income lagged expenses by \$16,444.

Special Offering Activity Summary - December

Thanksgiving \$225
Christmas \$4,340

Capital Fund Balance

	12/31/2018	12/31/2019
Capital Acct (@Dio)	\$95,344	\$65,873
Steeple Fund (B&H)	\$6,458	\$17,260
Merrill Lynch	\$100	\$59,620
FOSL/Building for Ministry (B&H)	\$2,003	\$57,764
Total	\$103,905	\$200,517

Building for Ministry

\$117,384 Contributions as of December 31, 2019

Detailed reports of expenses for Communications, Education, Membership, Finance, Maintenance & Repair, Office, Outreach, Stewardship, Utilities and Worship are available from the bookkeeper for review.

Balance Sheet copies were provided to the Wardens and the Finance Committee.

Alan Hope, Treasurer
Prepared by Susan Bentley, Parish Administrator

St. Luke's Episcopal Church

Month ending Dec 31, 2019

	Budget 2019	Actual 100.0%	Y-T-D 2019	Dec 2019	Y-T-D 2018	Dec 2018
Plate	\$7,000	146.4%	\$10,246	\$2,426	\$5,591	815
Pledges	\$480,196	94.0%	\$451,398	\$56,967	\$448,205	49,904
Prior Yr.			\$5,795	\$0	\$1,670	0
Current			\$424,495	\$50,859	\$403,735	46,104
Prepaid			\$21,108	\$6,108	\$42,800	3,800
Day Sch.	\$27,537	97.4%	\$26,826	\$4,556	\$26,508	4,386
Rents	\$29,000	95.3%	\$27,651	\$2,156	\$29,108	2,828
Misc.	\$800	124.3%	\$994	\$66	\$853	96
Initial Offering	\$400		\$598	\$0	\$455	30
Other	\$400		\$396	\$66	\$398	66
TOTAL OPS INCOME	\$544,533	95.0%	\$517,116	\$66,172	\$510,266	\$58,029
Personnel	\$387,334	95.2%	\$368,570	\$42,121	\$341,668	\$33,705
Clergy	\$250,935	97.2%	\$243,858	\$24,427	\$207,286	\$17,351
Lay Staff	\$130,121	89.2%	\$116,125	\$17,451	\$126,193	\$15,995
Support	\$6,278	136.8%	\$8,587	\$243	\$8,189	\$359
Admin**	\$109,550	100.5%	\$110,109	-\$15,116	\$110,539	\$7,485
Utilities	\$36,000	107.4%	\$38,661	\$4,398	\$35,090	\$3,113
ACH fees	\$300	98.0%	\$294	\$34	\$300	\$25
Office	\$15,000	93.1%	\$13,969	\$880	\$13,778	\$962
Maint/repair**	\$36,000	97.0%	\$34,931	-\$20,428	\$39,838	\$3,385
Insurance & Other	\$22,250	100.0%	\$22,254	\$0	\$21,533	\$0
Education	\$6,060	68.5%	\$4,154	\$794	\$2,607	\$910
Giving/Outreach	\$35,000	100.0%	\$35,000	\$4,634	\$41,018	\$3,107
Diocesan Pledge as of 6/12	\$34,000	100.0%	\$34,000	\$4,634	\$40,018	\$3,107
Region 6 Pledge	\$1,000	100.0%	\$1,000	\$0	\$1,000	\$0
Finance	\$1,700	70.6%	\$1,200	\$0	\$1,200	\$0
Stewardship	\$1,900	119.0%	\$2,261	\$86	\$2,073	\$0
Worship	\$5,850	95.9%	\$5,612	\$20	\$5,037	\$383
Communications	\$2,500	91.4%	\$2,284	\$131	\$2,041	\$45
Membership	\$2,650	115.0%	\$3,048	\$64	\$2,366	\$833
Invitation	\$500	33.8%	\$169	\$0	\$605	\$550
Safe Church	\$150	0.0%	\$0	\$0	\$141	\$0
Fellowship	\$2,000	144.0%	\$2,879	\$64	\$1,620	\$283
Vestry Emerging Needs	\$2,000	66.0%	\$1,320	\$616	\$1,372	\$0
Total Operating Exp	\$554,544	96.2%	\$533,560	\$33,351	\$509,922	\$46,467
Operating Fund Balance:						
Net Income to Date	\$544,533		\$517,116		\$510,266	
Expense to Date	\$554,544		\$533,560		\$509,922	
Gain/Loss to date	-\$10,011		-\$16,444		\$344	
Special Offering Income	\$12,000	111.3%	\$13,351	\$4,565	\$19,835	\$11,364
Special Offering Expense	\$12,000	170.2%	\$20,425	\$0	\$13,351	\$0

** Some 2019 expenses moved to Steeple Fund

02/06/20

St. Luke's Episcopal Church
Balance Sheet
As of December 31, 2019

	Dec 31, 19
ASSETS	
Current Assets	
Checking/Savings	
Burke & Herbert Bank	310,211.14
Merrill Lynch Acct	65,309.28
Total Checking/Savings	375,520.42
Total Current Assets	375,520.42
Other Assets	
Church Building	726,000.00
Church Elevator	242,010.23
Church Land	72,000.00
Church Organ	375,000.00
Diocesan Capital Account	65,873.30
Diocesan Endowment Fund	329,769.63
Diocesan Hergenrather Fund	3,165.08
Diocesan Living Memorial Fund	20,241.70
Diocesan Vestry Account	21,846.06
Trust Note	16,750.00
Total Other Assets	1,872,656.00
TOTAL ASSETS	2,248,176.42
LIABILITIES & EQUITY	
Liabilities	
Current Liabilities	
Credit Cards	
Burke & Herbert Credit Card	443.60
Total Credit Cards	443.60
Total Current Liabilities	443.60
Total Liabilities	443.60
Equity	
Opening Balance Equity	-85,906.07
Retained Earnings	1,683,021.93
Temp Restricted Net Assets	
2019 Capital Campaign	117,383.63
Altar Flowers	1,688.25
Altar Guild	3,451.44
Community Outreach	13,758.60
Concerts at St. Lukes	4,949.99
Diocesan Capital Account	65,873.30
Diocesan Endowment Fund	329,769.63
Diocesan Hergenrather Fund	3,165.08
Diocesan Living Memorial Fund	20,241.70
Diocesan Vestry Account	21,846.06
Endowment Committee	553.99
Instrument Mainten Fund	1,989.65
Music Fund	1,142.76
Pastoral Care	125.89
Retreat - Parish	2,025.17
Retreat - Vestry	-214.16
Special Offerings	5,370.05

02/06/20

St. Luke's Episcopal Church
Balance Sheet
As of December 31, 2019

	<u>Dec 31, 19</u>
Vacation Bible School	374.68
Vestry Designated Ops 2011	7,769.00
Youth Adventure Trips	6,071.06
Youth Group	1,300.00
Youth Mission Trips	3,300.00
Youth Pilgrimage Trips	<u>9,122.03</u>
Total Temp Restricted Net Assets	621,057.80
Unrestricted Net Assets	46,003.54
Net Income	<u>-16,444.38</u>
Total Equity	<u>2,247,732.82</u>
TOTAL LIABILITIES & EQUITY	<u><u>2,248,176.42</u></u>

Capital Campaign Fund Breakdown 2019

Fund Balances

	12/31/2018	12/31/2019
Capital Acct @ Trustees of the Funds	\$ 95,343.50	\$ 65,873.00
Merrill Lynch/BfM	\$ 100.23	\$ 59,620.00
B&H/BfM	-	\$ 57,764.00
B&H/Steeple Fund	\$ 6,458.24	\$ 17,260.00
B&H/FOSL	\$ 2,003.25	-
	<u>\$ 103,905.22</u>	<u>\$ 200,517.00</u>

Fund Income

	2018	2019
Cell Tower	\$ 106,022.00	\$ 131,374.40
FOSL	\$ 3,000.00	\$ -
Building for Ministry	-	\$ 117,383.63
	<u>\$ 109,022.00</u>	<u>\$ 248,758.03</u>

Building for Ministry Capital Campaign

Pledge & Contribution Detail

Pledge total	\$ 525,000.00
Contributions	2019 \$ 117,383.63
	Total \$ 117,383.63
Pledge Balance	\$ 407,616.37

FOSL Loan Detail

John Marshall Bank loan paid in full on 9/5/2019

Account Activity Summary for 2019

	Balance 12/31/2018	Balance 12/31/2019
Burke & Herbert (checking)	\$ 284,915.00	\$ 310,211.14
Merrill Lynch (brokerage)	\$ 100.23	\$ 65,309.28

Trustees of the Funds

	Market Value 12/31/2018	Gifts	Market Value 12/31/2019
Endowment Shares	\$ 272,178.94 211.32	\$ 4,408.29	\$ 329,769.63 233.13
Living Memorial Shares	\$ 18,431.39 14.31		\$ 20,241.70 14.31
Capital Fund Shares	\$ 91,548.69 71.08		\$ 65,873.30 45.57
Vestry Acct Shares	\$ 18,920.33 14.69		\$ 21,846.06 15.44
Hergenrather Shares	\$ 2,742.67 2.13	\$ 150.00	\$ 3,165.08 2.24

2020 Budget

St. Luke's - Wellington

FT Rector/Interim 9 mos., 6
supply clergy, FT Assoc. Rector
and Admin.; PT Music, Comms;
1.92% COLA

	Revised 6/11/2019		
	Revised Budget 2019	Changed Amount	Budget 2020
REVENUES			
Plate	7,000	-	7,000
Pledges	470,196	(36,996)	433,200
Non-Pledge	10,000	-	10,000
Day School	27,537	-	27,537
Rents	29,000	6,000	29,000
Miscellaneous	800		1,000
Initial Offering	400	200	600
Other: (Interest from Burke & Herbert Account)	400	-	400
Total Operating Income	\$ 544,533		\$ 507,737
EXPENSES			
Personnel	387,334		352,570
Clergy	250,935	(37,262)	213,673
Lay Staff	130,121	2,498	132,619
Seminarian	-	-	-
Support (Includes Workers Comp)	6,278	-	6,278
Admin	109,550		110,230
Utilities	36,000	-	36,000
Office	15,000	300	15,300
Automated Clearing House (ACH) Deposits	300	(300)	-
Maintenance & repairs	36,000	-	36,000
Insurance & Other	22,250	680	22,930
Education	6,060		6,060
Giving & Outreach	35,000		26,000
Diocesan Pledge	34,000	(9,000)	25,000
Region 6 Pledge	1,000	-	1,000
Finance	1,700		1,700
Stewardship	1,900		1,900
Worship	5,850		5,850
Communications	2,500		2,500
Membership	2,650		2,500
Invitation	500	-	500
Safe Church	150	(150)	-
Fellowship	2,000	-	2,000
Vestry Emerging Needs	2,000		2,000
Total Operating Expenses	\$ 554,544		\$ 511,310
		Income - Exp =	\$ (3,573.00)